



VAST 2

License Guide

Notice

For VAST 2 v.2.12 and earlier versions

* VAST 2 provides two installation versions, including Free Standard Version (32-CH, support VIVOTEK Cameras) and Trial Version (256-CH, support VIVOTEK & ONVIF Cameras, and all advanced license features are available).

* The Trial Version will become to the Free Version after 60 days. Users can purchase the license to remove the limitation.

For VAST 2 v.2.13 and later versions

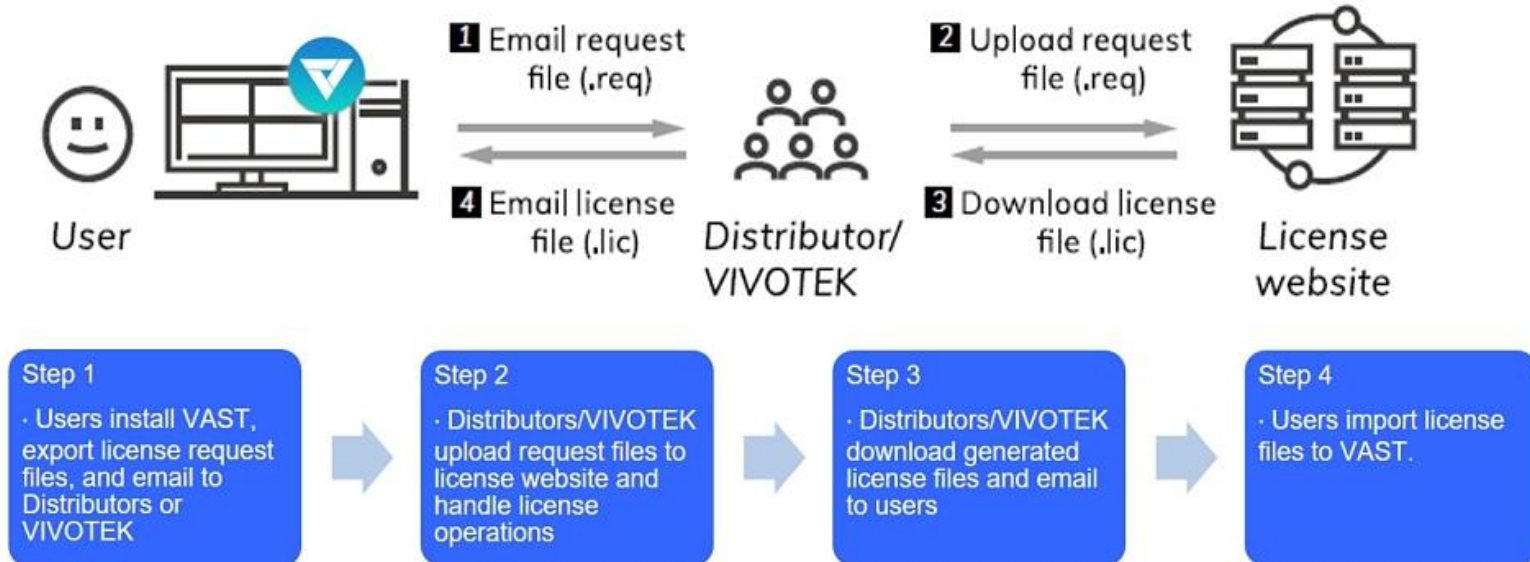
The trial and free 32-CH options are no longer packaged along with the software. Users need to activate the software to redeem the complimentary licenses or activate for the trial license.

* Complimentary license supports maximum 32-CH VIVOTEK cameras.

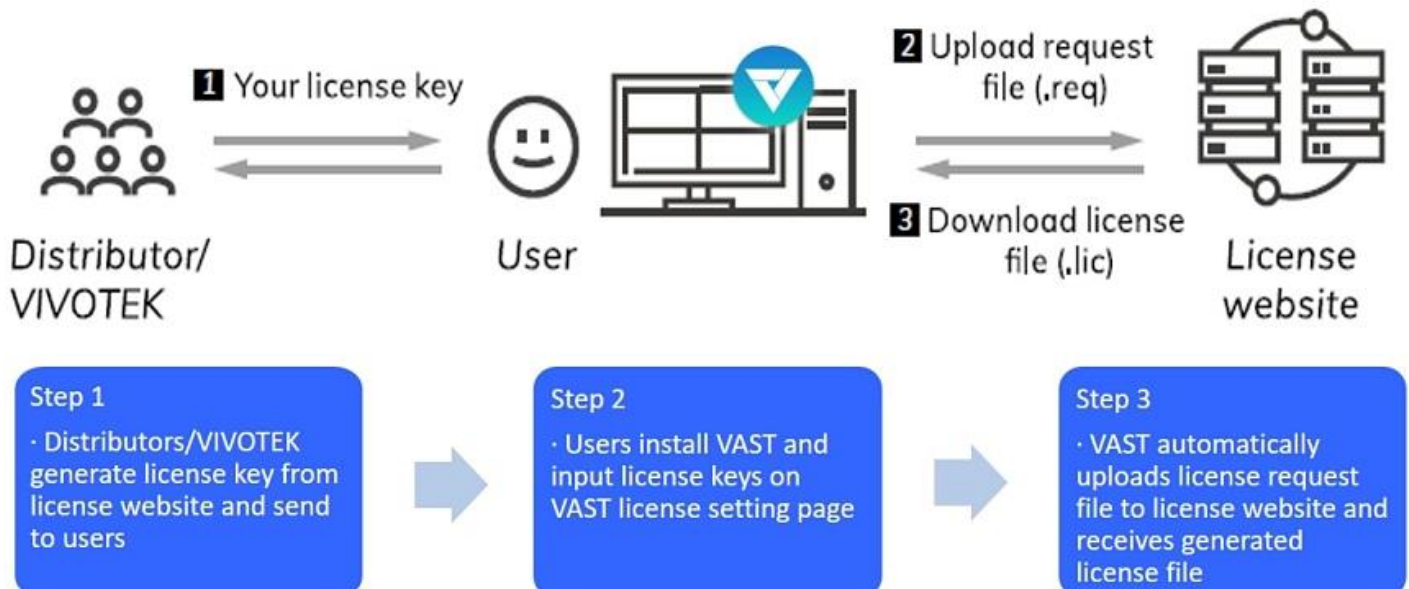
* Trial license supports 256-CH VIVOTEK & ONVIF cameras, and all advanced license features for 60 days.

License Procedure

For VAST 2 v.2.12 and earlier, follow the License File Activation Procedure



For VAST 2 v.2.13 and later, follow the License Key Activation Procedure

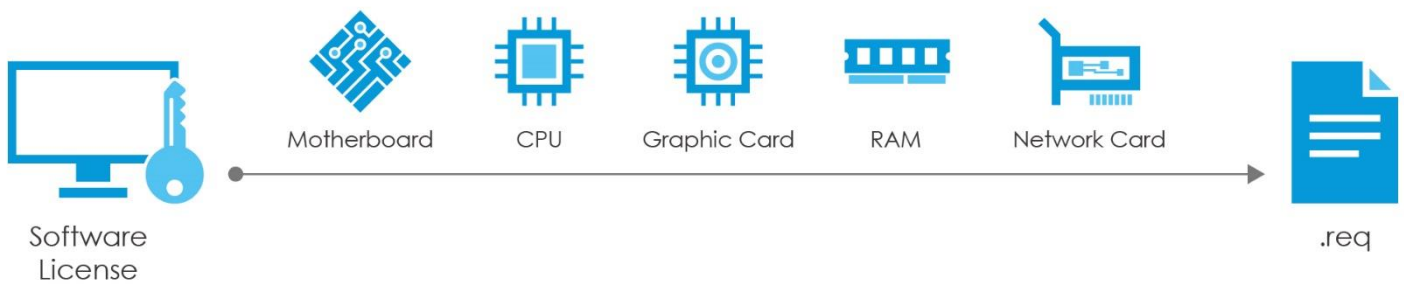


Learn more about the License Key Activation Procedure, check these two tutorial videos

1. [License Key Online Activation](#)
2. [License Key Offline Activation](#)

VAST 2 License Protection Mechanisms

The software license is verified by identifying unique characteristics of the user's PC. Its file contains data on the basic configuration (Motherboard, CPU Processor, Graphics Card, RAM and Network Card) of all servers in order to ensure efficiency. If the user changes any three of these basic hardware components, the software license will become invalid.



Calculation of License

Camera License

Users can connect up to 32 channels of VIVOTEK Camera devices for free upon activation. Each additional IP device requires one camera license.

* The amount of cameras that an NVR can connect depends on each NVR model's capability and no extra camera licenses are required.

Note:

- If connection of more than 32 channels of VIVOTEK camera devices or connection with any third-party camera devices are required, please upgrade your VAST 2 software through the license purchase option.

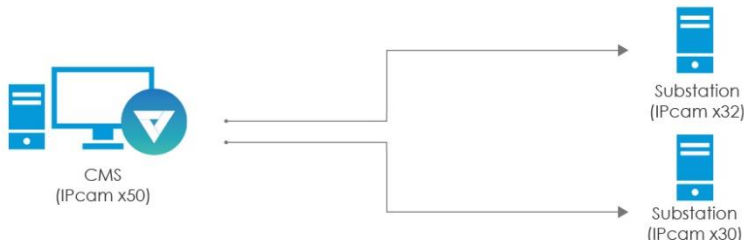


Scenario:

The user adds 50 cameras to a single server.
How many licenses need to buy?

Formula:

- Camera license = Total channel of cameras minus free 32 channels.
- Total number of cameras: 50
- Free channel for VIVOTEK camera: 32
- The user needs to buy 18 camera licenses for this scenario. (50-32)



Scenario:

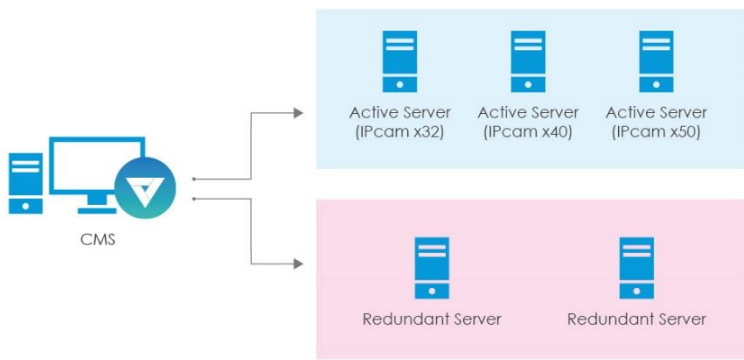
CMS server connect with 50 cameras.
Substation 1 connect with 32 cameras.
Substation 2 connect with 30 cameras.
The user adds two substations to CMS server.
How many licenses need to buy?

Formula:

- Camera license = Total channel of cameras minus free 32 channels.
- Total number of cameras: 50+32+30=112
- Free channel for VIVOTEK camera: 32
- The user needs to buy 80 camera licenses for this scenario. (112-32)

Substations Failover License

Number of channels on the active server hosting the largest number of cameras multiplied by the number of redundant servers.



Scenario:

In this case, the user used 3 active-servers for recording. The channel of each active-server is 32, 40 and 50. The user uses 2 redundant-servers for backing up their servers.

How many licenses do they need to buy?

Formula:

- Camera license = Total channel of cameras minus free 32 channels.
- Substations failover license = The number of channels on the active server hosting the largest number of cameras multiplied by the number of redundant servers.
- The channel of cameras for each active server: 32, 40 and 50.
- The free channel for VIVOTEK camera: 32
- The number of redundant-servers: 2
- The user needs to buy 90 (32 + 40 + 50 - 32) camera license and 100 (50 x 2) substations failover licenses for this scenario.

Note:

- These licenses do not come with a hardware dongle.
- M x N structure supported.
- The CMS station will be the main station for the control and monitoring of all the active and redundant servers.
- The Substations failover license needs to be imported to the CMS server.

Transportation License

Transportation License is including camera normal usage licenses.



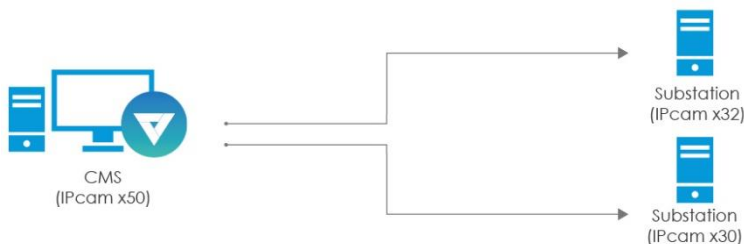
Scenario:

The server connects with 50 cameras.

How many licenses need to buy?

Formula:

- Transportation license = Total channel of cameras.
- Total number of cameras: 50
- The user needs to buy 50 transportation licenses for this scenario.



Scenario:

The CMS server connects with 50 cameras.

The substation 1 connects with 32 cameras.

The substation 2 connects with 30 cameras.

The user adds two substations to CMS server.

How many licenses need to buy?

Formula:

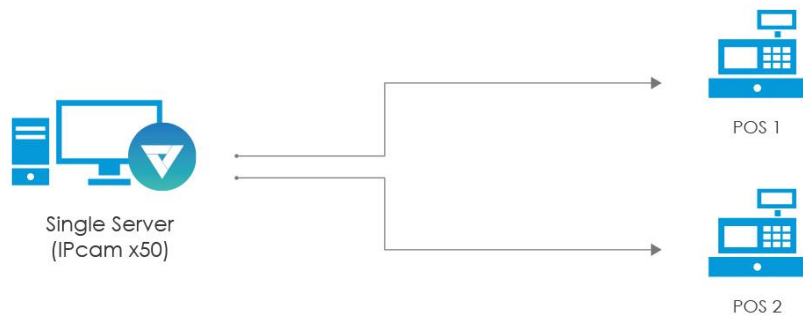
- Transportation license = Total channel of cameras
- Total number of cameras: $50+32+30=112$
- The user needs to buy 112 transportation licenses for this scenario.

Note:

- Users are required to show their mobile server on the Google map.
- Users can deploy generic GPS device or VIVOTEK's mobile NVR (with a built-in GPS)
- If using a generic GPS, only IP-based devices are supported.

Transaction Solution

POS License and Camera Licenses are charged separately.



Scenario:

The single server connect with 50 cameras.

The user adds two POS to single server.

How many licenses need to buy?

Formula:

- POS license = Total number of POS terminal(s).
- Camera license = Total channel of cameras minus free 32 channels.
- Total number of POS terminals: 2
- Total number of cameras: 50
- Free channel for VIVOTEK camera: 32
- The user needs to buy 2 POS Licenses and 18 [50 - 32(free)] Camera Licenses.

Note:

- Please confirm the POS brand/model compatibility in the datasheet before purchasing.