



**VAST Security Station**

# **VSS Installer Guide: Activation & Licensing**

# Contents

Overview ..... 3

VSS Edition ..... 3

Licenses of Each Edition ..... 3

VSS Activation ..... 5

Edition Switching..... 10

Additional Notes ..... 11

Frequently Asked Questions (FAQs) ..... 11

More Information & Support ..... 11



## Overview

The VSS software requires license activation to unlock specific features based on the selected edition. Depending on the license you activate, VSS will operate as one of four editions: Trial, Lite, Standard, or Professional. This guide provides step-by-step instructions for license activation to ensure uninterrupted access to VSS functionalities.

## VSS Edition

Below is a summary comparing the features and scalability of different VSS editions:

- **Lite Edition:** Basic functionalities for smaller setups; supports up to 32 VIVOTEK cameras and functions as a single VMS station.
- **Standard Edition:** Intermediate features; supports up to 256 cameras and can manage VIVOTEK ND-series NVR as substations.
- **Professional Edition:** Advanced features; supports up to 22,400 cameras under CMS/Substation systems.

For additional guidance, visit the [VSS Product Spec](#) on the VIVOTEK website.

## Licenses of Each Edition

Depending on the license you activated on VSS, your VSS will become one of the three editions. Below are the instructions for the licenses of each edition.

- **Trial**
  - No activation is needed.
  - Upon installation, a **60-day** trial with full features and unlimited camera connections will **automatically** begin. This initial trial activation is **mandatory**, but users can freely upgrade to their preferred edition anytime.
  - The live view, playback, and recording service will be stopped when the trial ends.
- **Lite Edition**
  - Free edition requiring activation (online or offline).
  - No need to purchase licenses.
- **Standard Edition**
  - Activation provides **8** complimentary VSS Std Camera Licenses and **192** complimentary Embedded NVR Camera Licenses. The complimentary licenses can be used for both VIVOTEK or ONVIF cameras.
  - Requires activation via online or offline methods.
  - **Standard Edition License Type:**
    - **VSS Std Camera License:** Every camera that connects to a VSS Standard Edition

Station requires one VSS Std Camera License.

- **VSS Embedded NVR Camera License:** Each camera connected to a VIVOTEK ND/NV series NVR that serves as a substation for the VSS Standard Station requires a VSS Embedded NVR Camera License.
- **VSS Std-to-Pro Upgrade License:** To upgrade from Standard Edition to Professional Edition, every VSS Std Camera License requires one VSS Std-to-Pro upgrade license.
- **Standard Edition License Calculation:**
  - For connections exceeding **8** cameras on the VSS Standard Edition Station, each additional camera will require one channel of VSS Std Camera License. Example: If you have 12 cameras connected to the VSS Standard Edition Station, purchase 4 VSS Std Camera Licenses ( $12 - 8 = 4$ ).
  - For cameras under VIVOTEK ND/NV series NVR substations exceeding 192, each additional camera needs a VSS Embedded NVR Camera License. Example: If you have 200 cameras connected through ND/NV series NVR substations, you will need 8 VSS Embedded NVR Camera Licenses ( $200 - 192 = 8$ ).
- **Professional Edition**
  - No complimentary licenses are included.
  - Requires activation via online or offline methods.
  - **Professional Edition License Type:**
    - **VSS Pro Camera License:** Each camera that connects to a VSS Professional Edition Station requires one *VSS Pro Camera License*.
    - **VSS Embedded NVR Camera License:** Each camera connected to a VIVOTEK ND/NV series NVR that serves as a substation for the VSS Professional Station requires a *VSS Embedded NVR Camera License*.
- **Professional Edition License Calculation:**
  - Each camera connected to the VSS Professional Edition station requires one VSS Pro Camera license.
  - For cameras connected under VIVOTEK ND/NV series NVR substations, one VSS Embedded NVR Camera License is required for each camera and must be activated on the CMS station.
  - For cameras connected under the VSS substation, one VSS Pro Camera license is required for each camera and must be activated on the VSS substation.

Example: Suppose you have a setup with 1 VSS CMS station, 1 VIVOTEK ND NVR substation, and 1 VSS substation:

  - 10 cameras are directly connected to the VSS CMS station.
  - 15 cameras are connected through the VIVOTEK ND NVR substation.
  - 20 cameras are connected through the VSS substation.

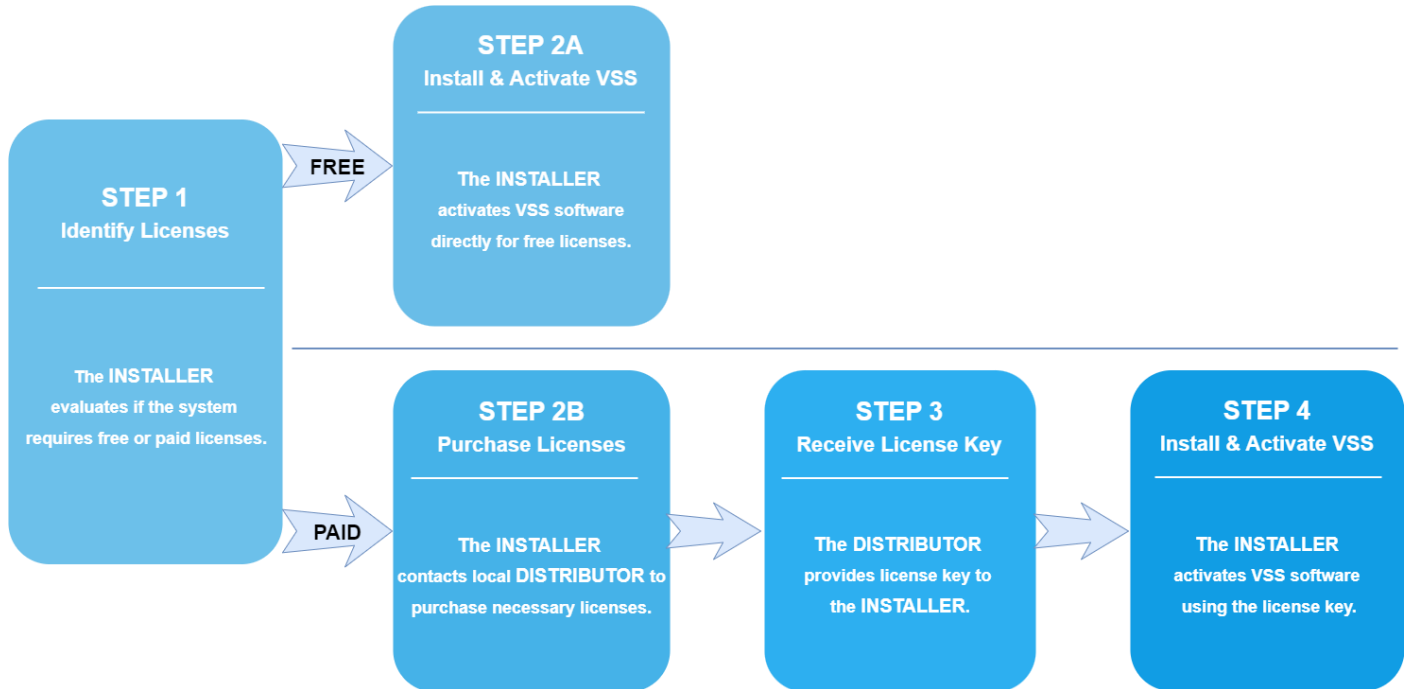
In total, you will need:

  - 10 VSS Pro Camera Licenses and 15 VSS Embedded NVR Camera Licenses (both activated on the CMS station).
  - 20 VSS Pro Camera Licenses (activated on the VSS substation).

## VSS Activation

Activating your VSS software ensures access to the desired features and functionalities based on your selected edition. Follow the steps below to determine your license needs, purchase the required licenses, and complete the activation process.

### Steps to Activating VSS:



#### **Step 1: Identify Your Edition and Licenses**

- Determine the most suitable edition for your setup.
- Calculate the required licenses using the rules mentioned in the previous section or the [VSS license calculator](#).
- If you have installed VSS software and connected all the cameras, you can also check the required licenses from *VSS Settings > System > License* page.

#### **Step 2: Purchase Licenses (if applicable)**

- Contact VIVOTEK regional sales or distributors to purchase licenses if required.
- If no paid license is needed, proceed to Step 4.

#### **Step 3: Receive and Save the License Key**

- You will receive a license key from the distributor. Please keep the whole string of the key for future activation and support. Below is the sample of the license key you will receive.

## License Key Sample

VIVOTEK\_Headquarter\_Server\_01\_Pro\_10\_NVR\_20\_c171be5154974b909bbb9cc5efa19198

The identifier helps recognize the key quickly.

License type and quantity of the key.

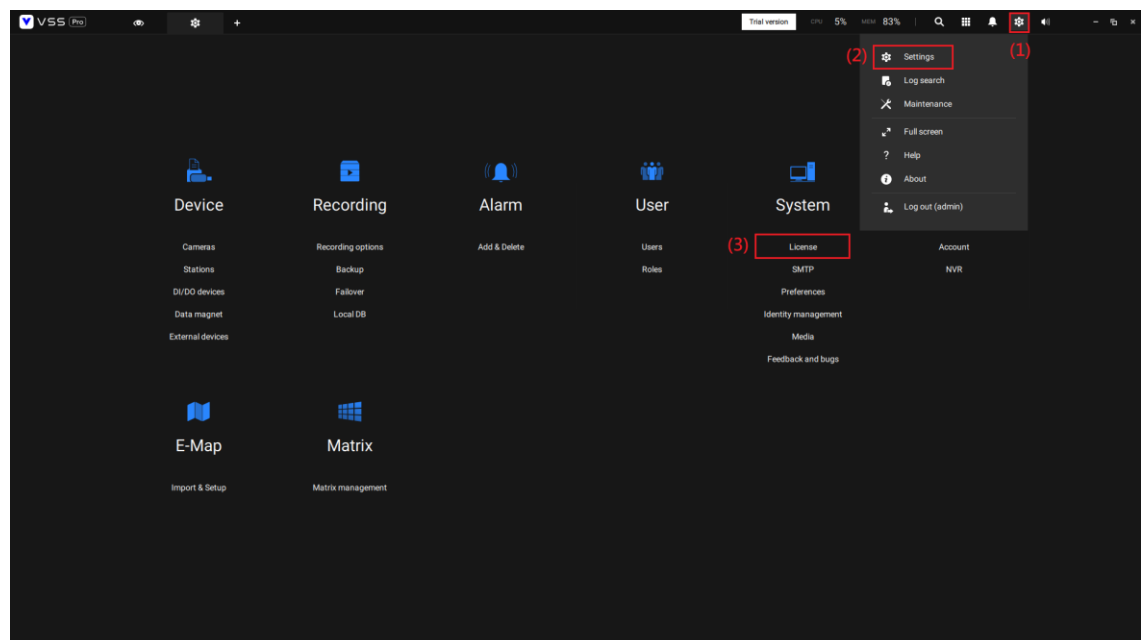
Encrypted random number generated by the system.

### Step 4: Install and Activate VSS Licenses

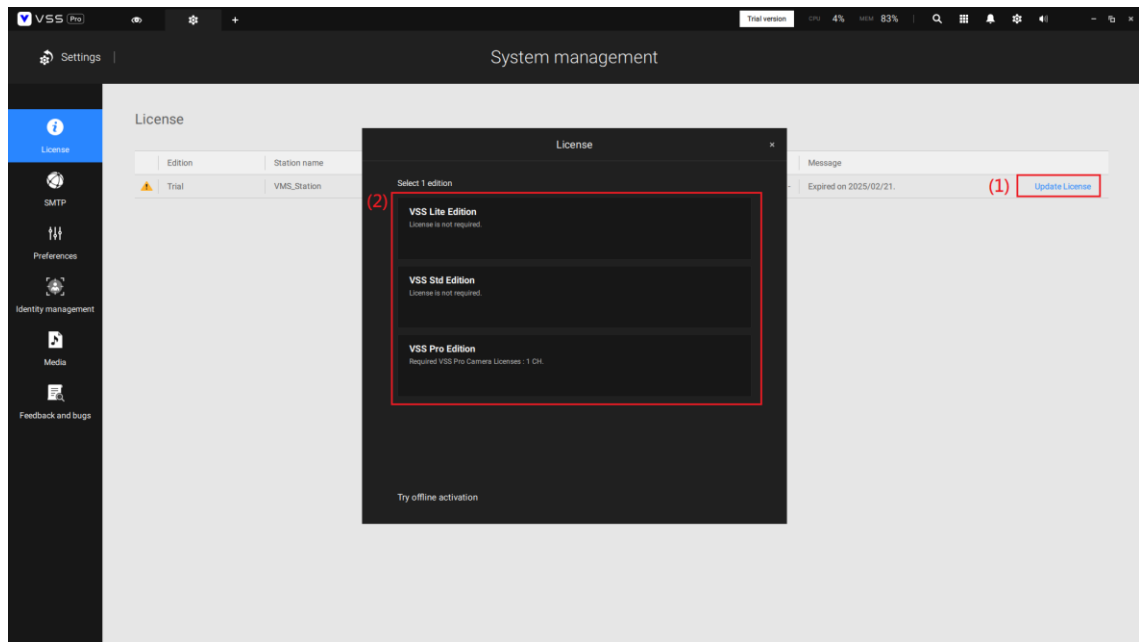
- Upon installation, a 60-day trial with full features and unlimited camera connections will automatically begin. This initial trial activation is mandatory, but users can freely upgrade to their preferred edition anytime.
- Activation is required for both free and paid versions. Follow one of the activation methods below:
- Online Activation Method (Preferred):**

If you have internet access, use the online activation method from the VSS license setting page to automatically complete the activation process. Online activation is recommended over offline activation. However, if online activation does fail, see Offline Activation below.

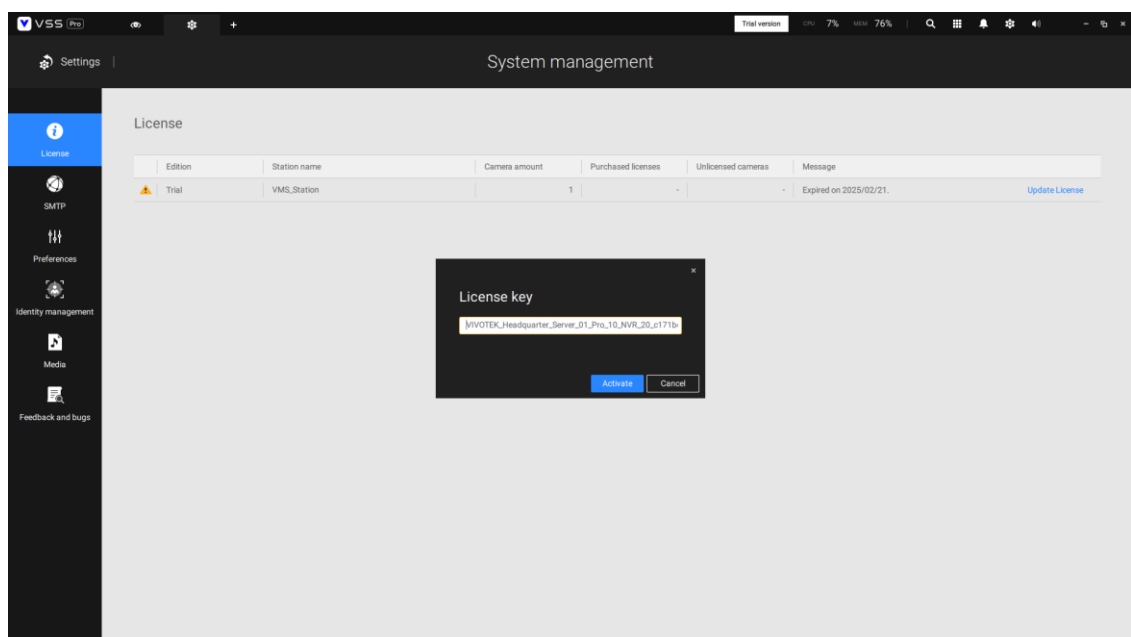
- Open the VSS software and navigate to the **Settings > System > License** page.



- Choose the VSS station you want to activate and click **Update License**. You can activate the license for substations from CMS station.



- Copy and paste the complete license key exactly as you received it into the designated field, click **Activate**, and then the activation process is finished.



If you still have problems, please refer to the step-by-step video guide:

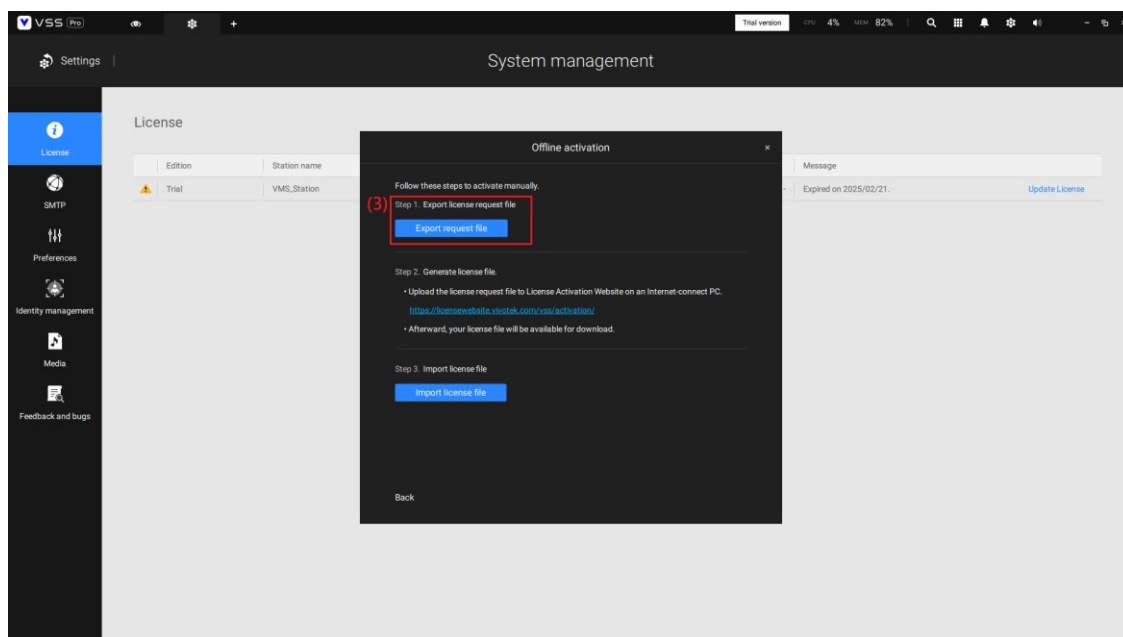
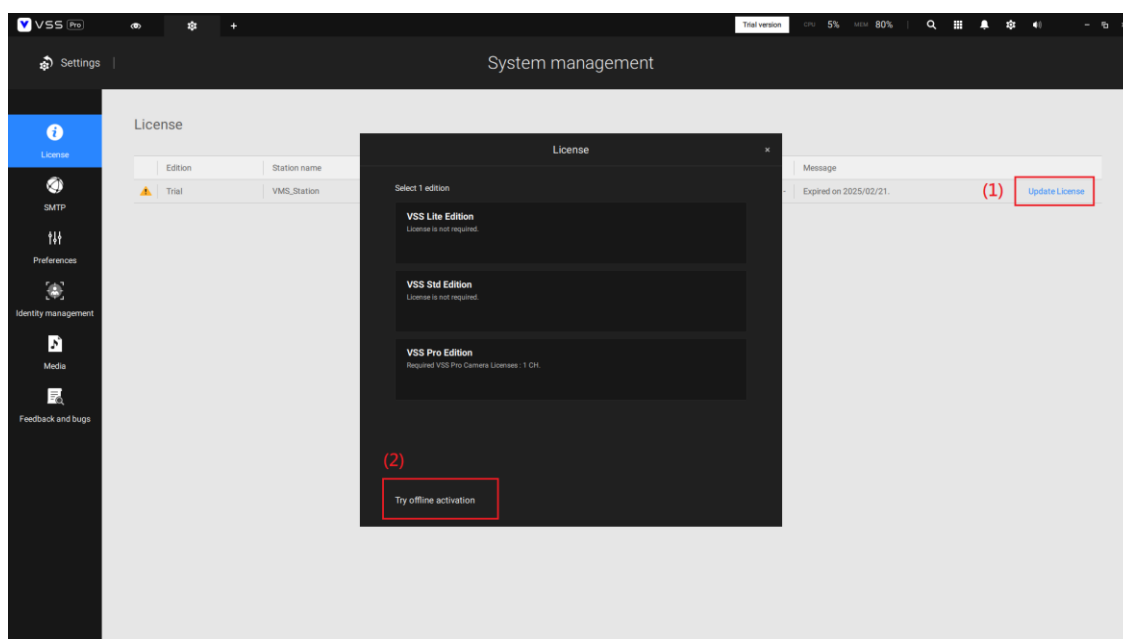
[How to Online Activate License](#)

- Offline Activation Method (For Systems Without Internet):**

If your VSS server does not have internet access, you must manually complete the activation process through the [VSS Activation Portal](#).

Offline licensing involves transferring files between a computer running VSS software and a computer with Internet access.

- Generate a license request file (.req) from **Settings > System > license page**.



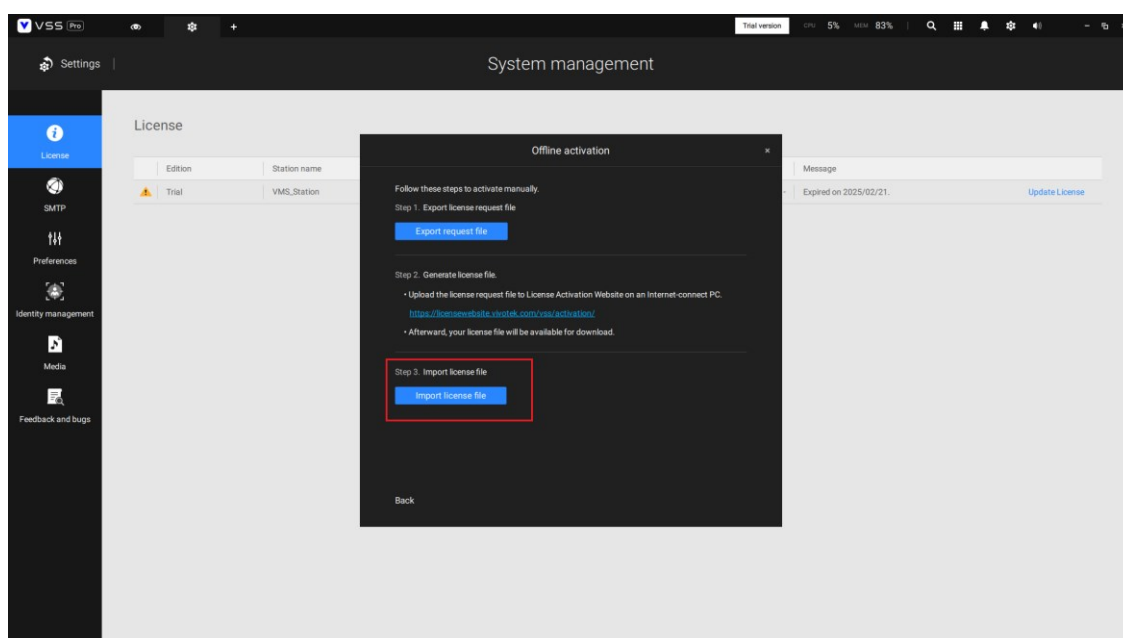
2. Submit the license request file and license key (if applicable) to the [VSS Activation Portal](#) via another internet-connected device.



The screenshot shows the VSS license activation website. The URL in the browser is <https://licensewebsite.vivotek.com/vss/activation/>. The page has a sidebar with 'VSS' and buttons for 'Activate license' and 'Return license'. The main content area is titled 'Generate license to activate' and lists five steps:

1. Select license edition: A dropdown menu is set to 'VSS Std'.
2. Upload License Request File (.req): A 'Choose file' button is shown, with 'No file chosen' below it.
3. Enter license key: A text input field labeled 'License key' is shown.
4. Generate license: A 'Generate' button is shown.
5. Import to VSS: This step is listed but has no associated input or button.

3. Download the licensed file (.lic) and upload it to the VSS software from **Settings > System > license page**.



If you still have problems, please refer to the step-by-step video guide:

[How to Offline Activate License](#)

## Edition Switching

After activating your VSS software, you may need to upgrade to another edition as your business grows. This section explains how to upgrade or downgrade your edition and the steps involved for each scenario.

### Upgrading Editions

Upgrading involves switching from a lower edition to a higher one (e.g., Lite to Standard, Professional, or Standard to Professional).

#### Steps for Upgrading:

##### **Step 1: Review System Setup**

Ensure your VSS system setup meets the requirements for the target edition:

- Check the number of cameras and determine if the number meets the edition spec and if additional licenses are needed.
- Verify whether your system includes substations and confirm their compatibility with the target edition.

##### **Step 2: Purchase Additional Licenses (if required):**

You must calculate and purchase additional licenses if the target edition requires additional licenses. Below are examples based on a system with 30 cameras currently using the Lite Edition:

- Upgrading from Lite Edition to Standard Edition:
  - When upgrading to Standard Edition, only the first 8 cameras are covered by complimentary licenses.
  - Hence, you need to purchase 22 VSS Std Camera Licenses ( $30 - 8 = 22$ ) for the upgrade.
- Upgrading from Standard Edition to Professional Edition:
  - For the 22 cameras currently covered by VSS Std Camera Licenses, you will need 22 VSS Std-to-Pro Upgrade Licenses to convert these licenses to Professional Edition.
  - For the remaining 8 cameras, you need 8 VSS Pro Camera Licenses.
  - In total, you need to purchase a license with 22 VSS Std-to-Pro Upgrade and 8 VSS Pro Camera License.

##### **Step 3: Activate the New Edition:**

Use the Online or Offline Activation Methods (as detailed in the "VSS Activation" section) to upgrade your edition.

### Downgrading Editions

Downgrading involves switching from a higher edition to a lower one (e.g., Professional to Standard, Lite, or Standard to Lite).

#### Steps for Downgrading:

##### **Step 1: Review System Setup:**

Ensure your current setup complies with the requirements of the target edition.

### **Step 2: Check for Paid Licenses:**

Verify if your current edition has any active paid licenses. These must be removed before downgrading, as license types and values differ by edition. Contact your distributor to obtain approval and initiate the return process, noting that return policies may vary.

### **Step 3: Activate the New Edition:**

Once your system meets the target edition's requirements and paid licenses are resolved, use the Offline Activation Method (see "VSS Activation" section) to switch editions.

### **Step 4: Purchase New Licenses (if required):**

If the target edition requires additional licenses, refer to the "VSS Activation Steps" section for guidance on purchasing and activating them.

## **Additional Notes**

- Please keep a copy of the license key and license file (.lic) for paid licenses. You must provide it if your license or device goes wrong.
- If you don't have sufficient licenses, the system runs in a 14-day grace period, and the camera live view, playback, and recording services of the VSS server will stop at the end of the grace period.
- Impact of Hardware Changes
  - VSS licenses are bound to hardware. Changes to three or more of the five major components (e.g., Motherboard, CPU Processor, Graphics Card, RAM, and Network Cards) will invalidate the license.
  - For VSS running on a Virtual Machine (VM; supporting VMware and Microsoft Hyper-V), the license is tied to the MAC addresses of the VM's network cards and the VM UUID (unique identifier for virtual machines). Any changes to these identifiers or alterations in the number of network cards within the VM will invalidate the license.

## **Frequently Asked Questions (FAQs)**

Can I transfer the license to new hardware?

Ans: Yes. The license can be transferred to a different hardware device up to three times.

The transfer process needs to be handled on the license portal. Therefore, you must prepare the license key or license files (.req, .lic) from your previous VSS hardware and the new license request file from the latest hardware and contact your distributor or VIVOTEK Support Center.

## **More Information & Support**

For additional product documentation and software upgrades, visit [VSS Download](#).

### **Technical Support**

Contact VIVOTEK Technical Support at the [VIVOTEK Support Center](#).

