

AM-52G

Quick Installation Guide

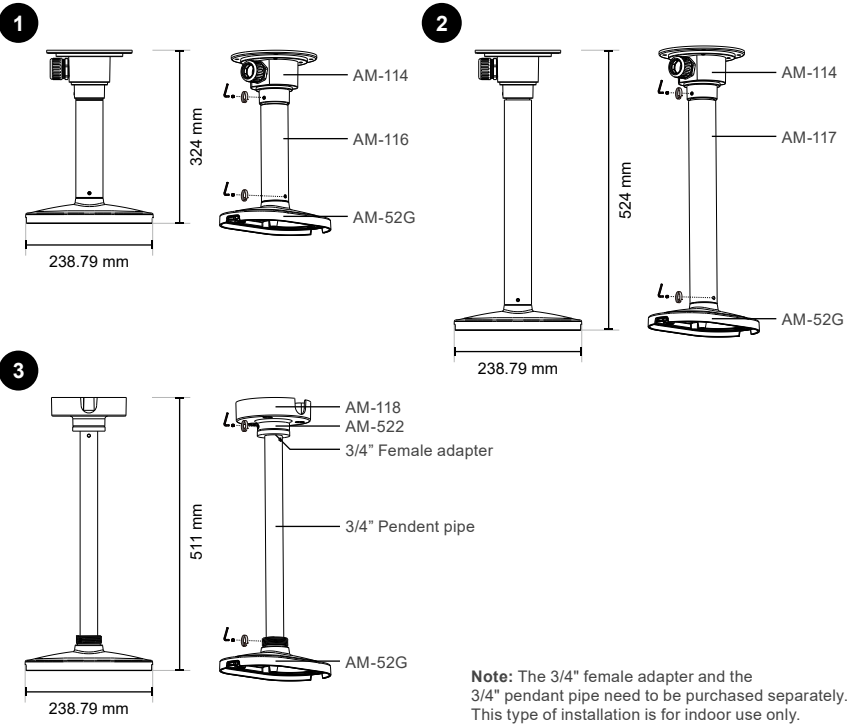
Revision History:
Rev. 1.0: Initial release

Compatible VIVOTEK Cameras

MA9311-EHTV
MA9312-EHTV

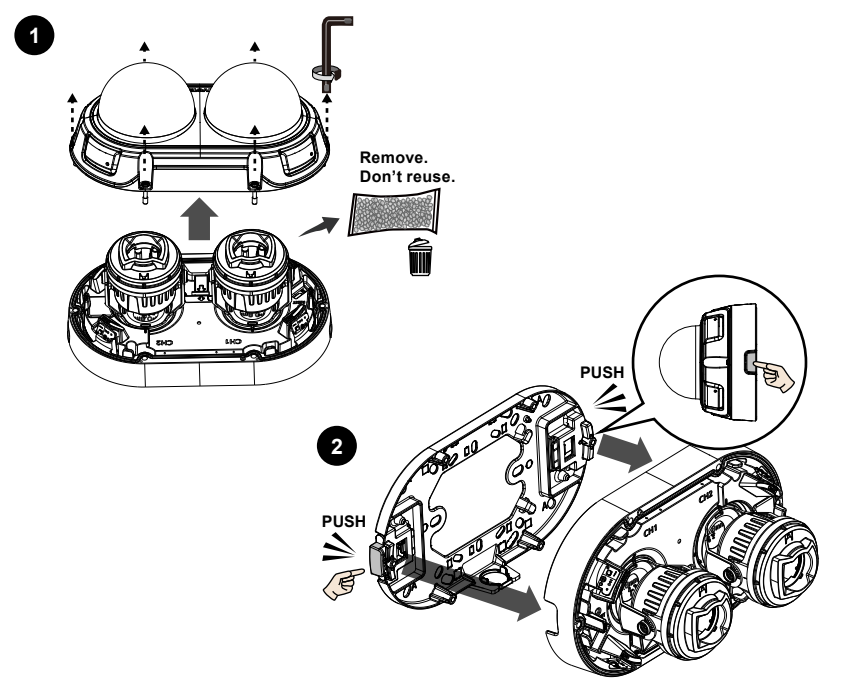
I Installation

1. Configuration - Pendant Pipe

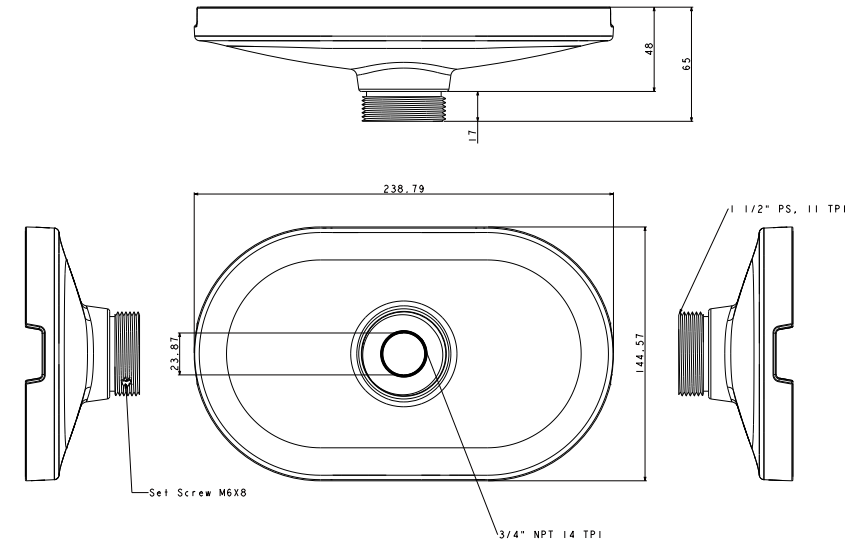


II Installing Camera to Mounting Cap

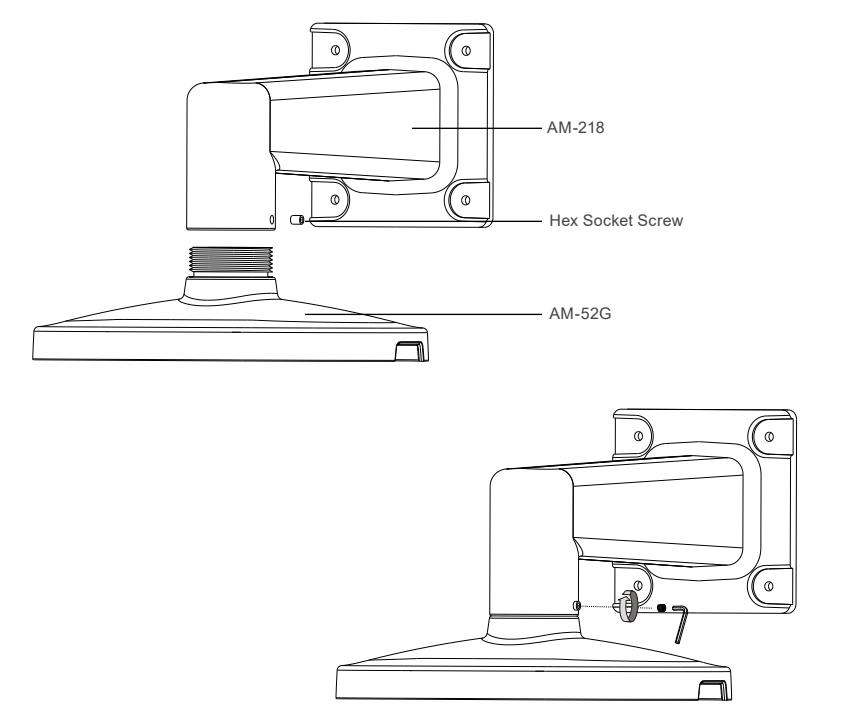
1. Disassemble the camera body.



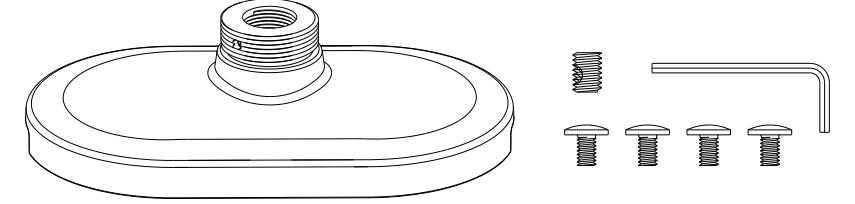
Mounting Dimensions



2. Configuration - Wall Mount



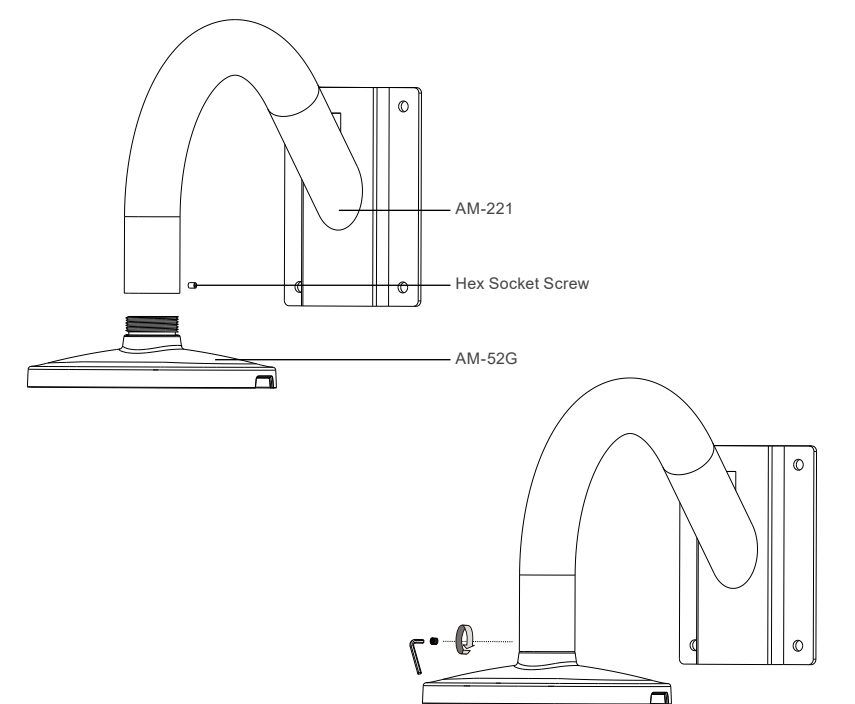
Package Contents



Screw description	No. of screws	Material char.
M4 x8 (SUS304)	4	
Hex wrench Hex socket screw (SUS304)	1	

For optimal installation, please use the hex socket screw included with the AM-52G when installing the pendant pipe, wall mount bracket, or gooseneck bracket.

3. Configuration - Gooseneck

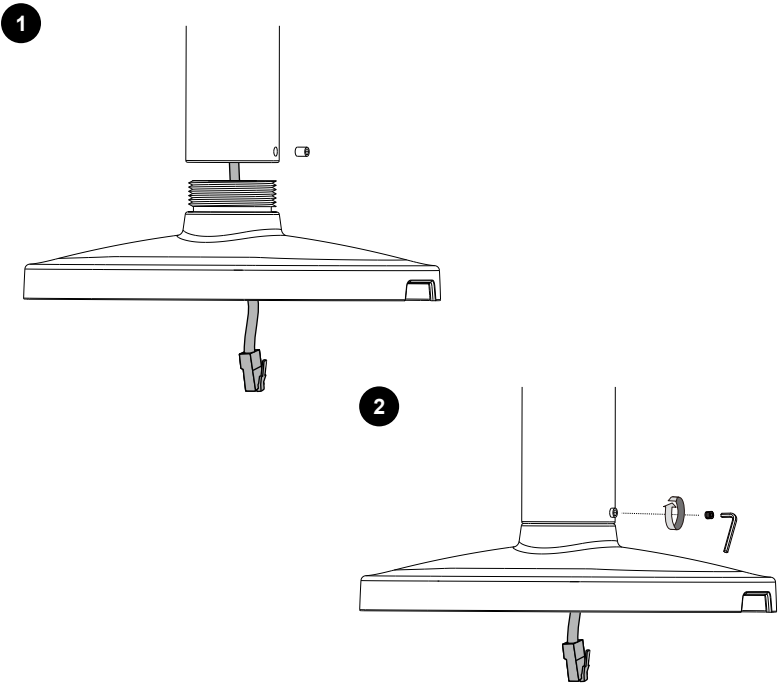


For RJ45 and IO Cable installation, please refer to the next page.

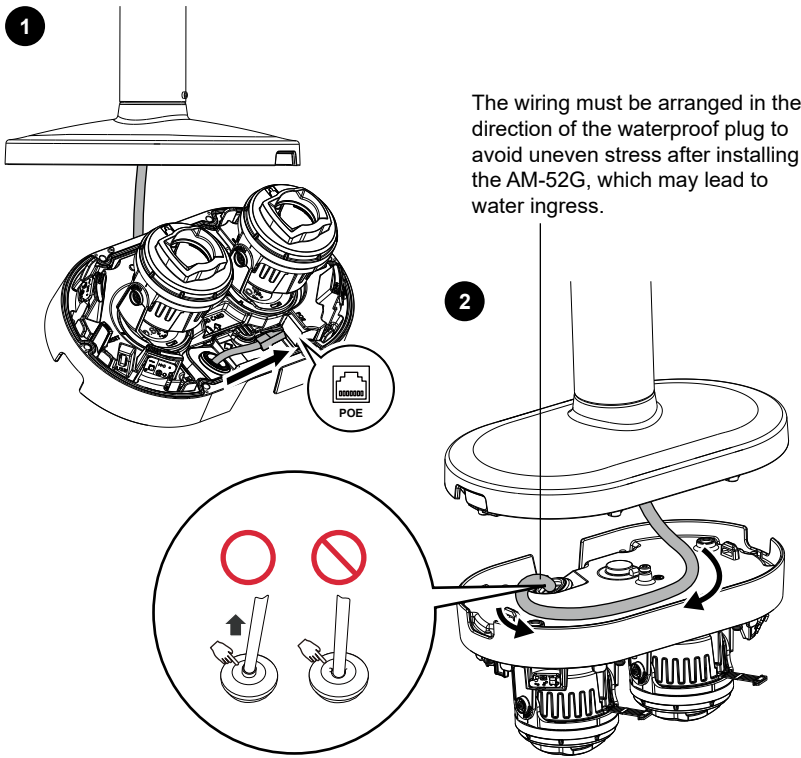


A. Installing Camera to Mounting Cap - RJ45

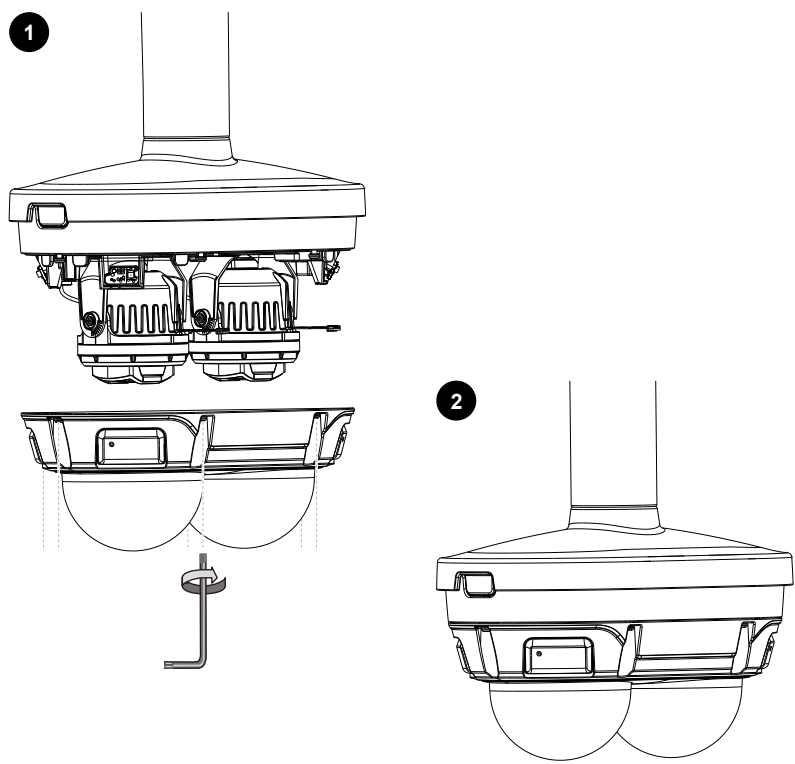
1. Attach the AM-52G to the mounting kit, and secure it in place with a set screw once it reaches the proper position.



2. Insert the RJ45 connector into the camera and properly seal the plug.

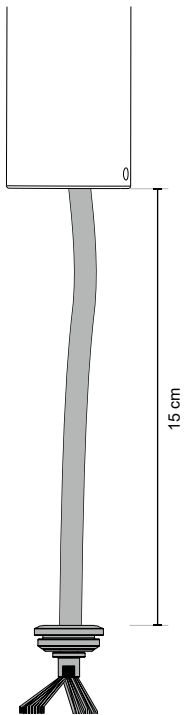


3. Attach the camera to the AM-52G and secure the camera cover.

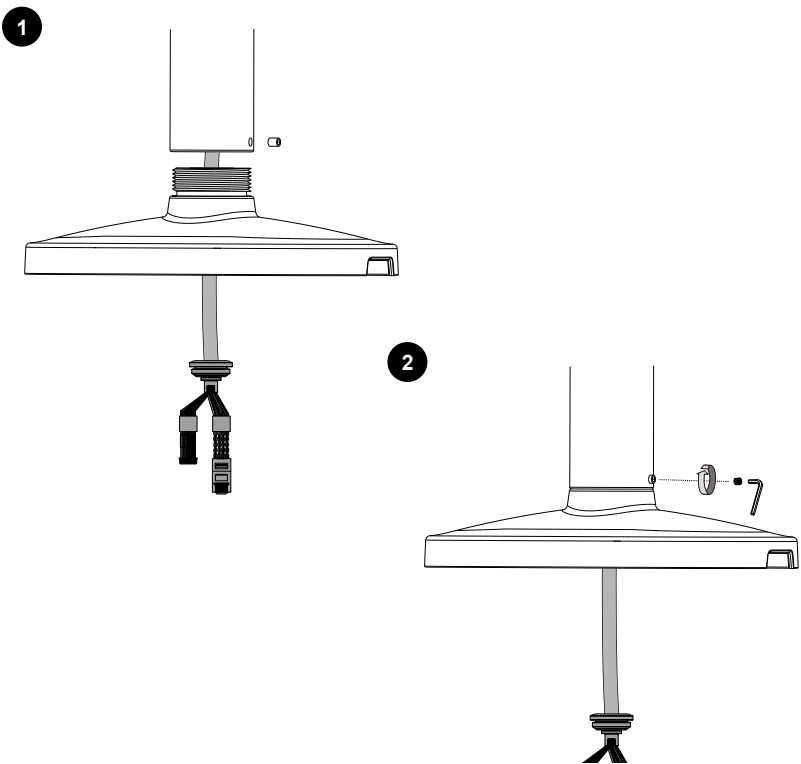


B. Installing Camera to Mounting Cap - IO Cable

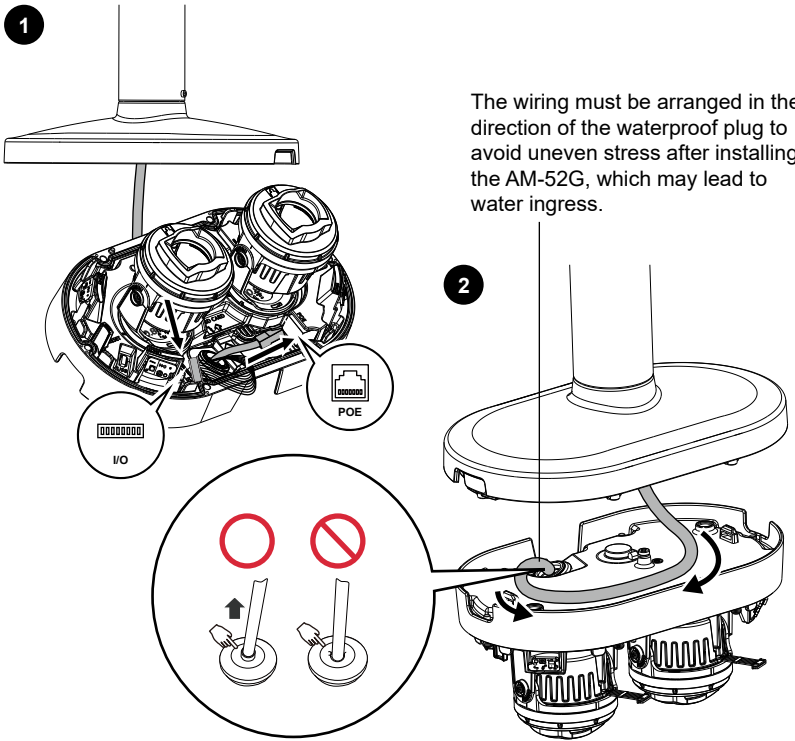
1. Connect the I/O cable to the Audio and PoE, ensure waterproofing is properly done, then tuck it back in while leaving about 15 cm of slack.



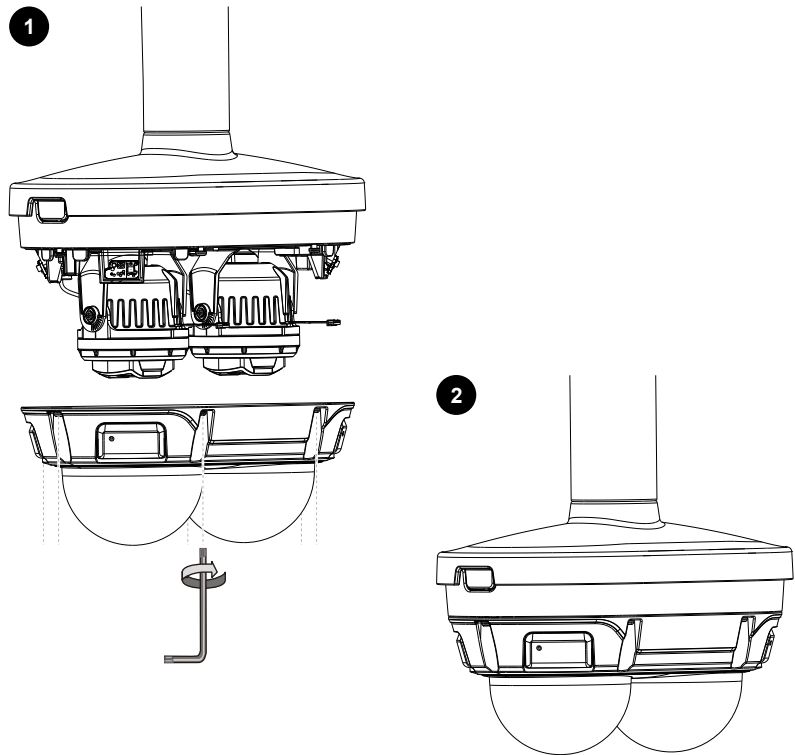
2. Attach the AM-52G to the Mounting Kit and secure it in place with a set screw once it is in the desired position.



3. Install the camera, connect the IO cable, and adjust the waterproof plug and the position of the excess cable.



4. Attach the camera to the AM-52G and secure the camera cover.



VIVOTEK
A Delta Group Company

www.vivotek.com
DESIGN AND SPECIFICATIONS ARE SUBJECT TO CHANGE WITHOUT NOTICE
Copyright © 2025 VIVOTEK INC. All rights reserved.