

CE Test Report

Product Name : Network Camera

Model No. : IB9389-EH-v2, IB9389-EHT-v2, IB839-EH, IB839-EHT

Applicant : VIVOTEK INC.

Address : 6F, No.192, Lien-Cheng Rd., Chung-Ho, New Taipei City,
Taiwan, R.O.C.

Date of Receipt : 2021/06/30

Issued Date : 2021/12/20

Report No. : 2161206R-E3012100081

Report Version : V2.0

The test results relate only to the samples tested.

The test results shown in the test report are traceable to the national/international standard through the calibration report of the equipment and evaluated measurement uncertainty herein.

This report must not be used to claim product endorsement by TAF or any agency of the government.

The test report shall not be reproduced without the written approval of DEKRA Testing and Certification Co., Ltd.

Measurement uncertainties evaluated for each testing system and associated connections are given here to provide the system information for reference. Compliance determinations do not take into account measurement uncertainties for each testing system, but are based on the results of the compliance measurement.

Test Report

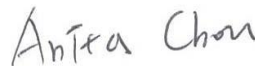
Issued Date : 2021/12/20

Report No. : 2161206R-E3012100081



Product Name : Network Camera
Applicant : VIVOTEK INC.
Address : 6F, No.192, Lien-Cheng Rd., Chung-Ho, New Taipei City,
Taiwan, R.O.C.
Manufacturer : VIVOTEK INC.
Model No. : IB9389-EH-v2, IB9389-EHT-v2, IB839-EH, IB839-EHT
EUT Rated Voltage : PoE
EUT Test Voltage : PoE
Trade Name : VIVOTEK
Applicable Standard : EN 50121-1: 2017
EN 50121-4: 2016+A1:2019
EN IEC 61000-6-4: 2019
Test Result : Complied
Performed Location : DEKRA Testing and Certification Co., Ltd.
Linkou Laboratory
No. 5-22, Ruishukeng
Linkou District, New Taipei City, 24451, Taiwan
TEL:+886-2-8601-3788 / FAX:+886-2-8601-3789

Documented By :



(Senior Engineering Adm. Specialist / Anita Chou)

Approved By :



(Director / Vincent Lin)

TABLE OF CONTENTS

Description	Page
1. General Information	6
1.1. EUT Description.....	6
1.2. Mode of Operation	7
1.3. Tested System Details	8
1.4. Configuration of Tested System	9
1.5. EUT Exercise Software.....	10
2. Technical Test	11
2.1. Summary of Test Result.....	11
2.2. List of Test Equipment	12
2.3. Measurement Uncertainty.....	14
2.4. Test Environment.....	16
3. Conducted Emissions (Telecommunication Ports).....	17
3.1. Test Specification	17
3.2. Test Setup.....	17
3.3. Limit.....	17
3.4. Test Procedure	18
3.5. Deviation from Test Standard.....	18
3.6. Test Result.....	19
3.7. Test Photograph	21
4. Radiated Emission.....	22
4.1. Test Specification	22
4.2. Test Setup.....	22
4.3. Limit	23
4.4. Test Procedure	24
4.5. Deviation from Test Standard.....	24
4.6. Test Result.....	25
4.7. Test Photograph	29
5. Electrostatic Discharge	31
5.1. Test Specification	31
5.2. Test Setup.....	31
5.3. Limit.....	31
5.4. Test Procedure	32
5.5. Deviation from Test Standard.....	32
5.6. Test Result.....	33
5.7. Test Photograph	35
5.8. EUT to dot photo for ESD test	36
6. Radiated Susceptibility	39
6.1. Test Specification	39
6.2. Test Setup.....	39

6.3.	Limit	39
6.4.	Test Procedure	40
6.5.	Deviation from Test Standard.....	40
6.6.	Test Result.....	41
6.7.	Test Photograph	43
7.	Electrical Fast Transient/Burst	46
7.1.	Test Specification	46
7.2.	Test Setup.....	46
7.3.	Limit	46
7.4.	Test Procedure	47
7.5.	Deviation from Test Standard.....	47
7.6.	Test Result.....	48
7.7.	Test Photograph	49
8.	Surge	50
8.1.	Test Specification	50
8.2.	Test Setup.....	50
8.3.	Limit.....	50
8.4.	Test Procedure	51
8.5.	Deviation from Test Standard.....	51
8.6.	Test Result.....	52
8.7.	Test Photograph	53
9.	Conducted Susceptibility	54
9.1.	Test Specification	54
9.2.	Test Setup.....	54
9.3.	Limit.....	55
9.4.	Test Procedure	55
9.5.	Deviation from Test Standard.....	55
9.6.	Test Result.....	56
9.7.	Test Photograph	57
10.	Power Frequency Magnetic Field	58
10.1.	Test Specification	58
10.2.	Test Setup.....	58
10.3.	Limit.....	58
10.4.	Test Procedure	59
10.5.	Deviation from Test Standard.....	59
10.6.	Test Result.....	60
10.7.	Test Photograph	61
11.	Attachment	62
	EUT Photograph.....	62

Revision History

Report No.	Version	Description	Issued Date
2161206R-E3012100081	V1.0	Initial issue of report	2021-07-16
2161206R-E3012100081	V2.0	Add two new models	2021-12-20

1. General Information

1.1. EUT Description

Product Name	Network Camera
Trade Name	VIVOTEK
Model No.	IB9389-EH-v2, IB9389-EHT-v2, IB839-EH, IB839-EHT

Note: The different of each model is shown as below:

Project Name	IB9389-EH-v2	IB839-EH	IB9389-EHT-v2	IB839-EHT
Lens Type	Fixed-focal		Motorized, Vari-focal, Remote Focus	

1.2. Mode of Operation

DEKRA has verified the construction and function in typical operation. All the test modes were carried out with the EUT in normal operation, which was shown in this test report and defined as:

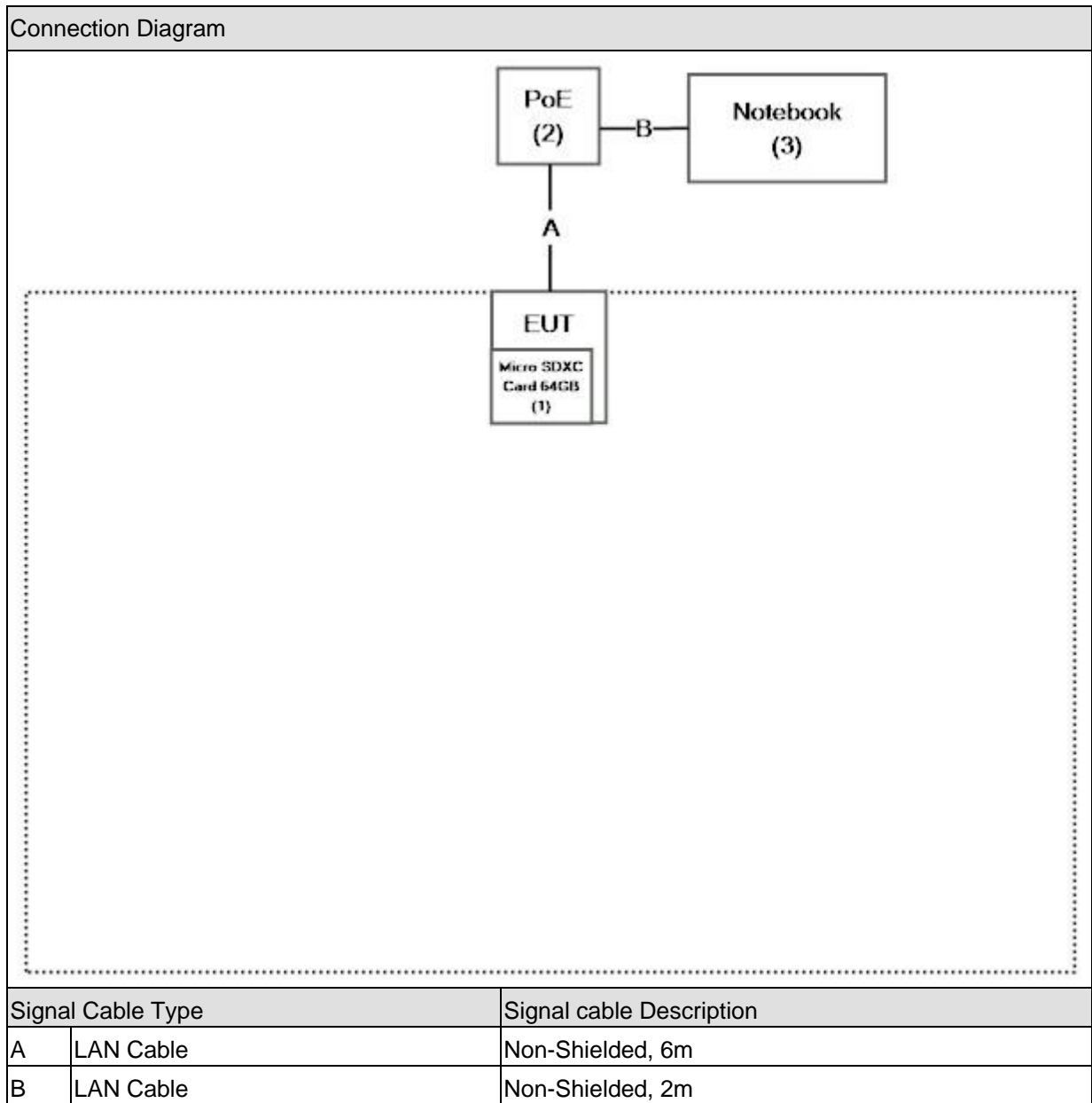
Pre-Test Mode	
Mode 1: IB9389-EHT-v2, PoE Mode	
Mode 2: IB9389-EH-v2, PoE Mode	
Final Test Mode	
Emission	Mode 1: IB9389-EHT-v2, PoE Mode
Immunity	Mode 1: IB9389-EHT-v2, PoE Mode

1.3. Tested System Details

The types for all equipments, plus descriptions of all cables used in the tested system (including inserted cards) are:

Product	Manufacturer	Model No.	Serial No.	Power Cord	
1	Micro SDXC Card 64GB	SanDisk	SanDisk Extreme microSDXC UHS-I	N/A	N/A
2	PoE	N/A	N/A	N/A	N/A
3	Notebook	Lenovo	ThinkPad T490	PF-21W2ES	Non-Shielded, 0.8m

1.4. Configuration of Tested System



1.5. EUT Exercise Software

1	Setup the EUT and simulators as shown on 1.4.
2	Turn on the power of all equipment.
3	All the features of the EUT operation normally.

2. Technical Test

2.1. Summary of Test Result

- No deviations from the test standards
 Deviations from the test standards as below description:

Emission			
Performed Item	Normative References	Test Performed	Deviation
Power Line Conducted Emission	EN IEC 61000-6-4: 2019 CISPR 16-2-1:2003+A1:2005 CISPR 16-1-2:2003/A2:2006	No	No
Impedance Stabilization Network (ISN)	EN IEC 61000-6-4: 2019 CISPR 32	Yes	No
Radiated Emission	EN IEC 61000-6-4: 2019 CISPR 16-2-3:2006	Yes	No
Power Harmonics	EN IEC 61000-3-2:2019	No	No
Voltage Fluctuation and Flicker	EN 61000-3-3: 2013+A1: 2019	No	No

Immunity			
Performed Item	Normative References	Test Performed	Deviation
Electrostatic Discharge	IEC 61000-4-2 Ed. 2.0: 2008	Yes	No
Radio-frequency electromagnetic field. (Radiated susceptibility)	IEC 61000-4-3 Ed. 3.2: 2010	Yes	No
Electrical fast transient/burst	IEC 61000-4-4 Ed. 3.0: 2012	Yes	No
Surge	IEC 61000-4-5 Ed. 3.1: 2014 +A1: 2017	Yes	No
Radio-frequency common mode (Conducted susceptibility)	IEC 61000-4-6 Ed. 4.0: 2013	Yes	No
Power frequency magnetic field	IEC 61000-4-8 Ed. 2.0: 2009	Yes	No

2.2. List of Test Equipment

Impedance Stabilization Network / SR8

Instrument	Manufacturer	Type No.	Serial No	Cal. Date
EMI Test Receiver	R&S	ESR3	101973	2020/11/19
LISN	R&S	ENV216	100097	2021/03/24
LISN	R&S	ESH3-Z5	836679/017	2021/03/12
Coaxial Cable	DEKRA	RG 400	LC018-RG	2021/06/18
Impedance Stabilization Network	Teseq	ISN T800	42815	2020/08/27

Note: All equipments that need to calibrate are with calibration period of 1 years.

Radiated Emission / Site2

Instrument	Manufacturer	Type No.	Serial No	Cal. Date
Bilog Antenna	Schaffner Chase	CBL6112B	2923	2020/11/24
EMI Test Receiver	R&S	ESCS 30	100369	2020/12/09
Coaxial Cable	DEKRA	RG 214	LC002-RG	2021/06/10
Pre-Amplifier	Jet-Power	JPA-10M1G33	170101000330009	2021/06/10
Coaxial signal switch	Anritsu	MP59B	6200436230	2021/06/10
Site2 NSA	DEKRA	N/A	N/A	2021/06/10

Note: All equipments that need to calibrate are with calibration period of 1 years.

Radiated Emission / CB7

Instrument	Manufacturer	Type No.	Serial No	Cal. Date
EMI Test Receiver	R&S	ESU26	100433	2020/11/20
Horn Antenna	ETS-Lindgren	3117	00202723	2020/09/25
Pre-Amplifier	EMCI	EMC051845SE	980359	2020/11/11
CB7 VSWR	DEKRA	N/A	N/A	2021/06/22

Note: All equipments that need to calibrate are with calibration period of 1 years.

Electrostatic Discharge / SR6

Instrument	Manufacturer	Type No.	Serial No	Cal. Date
ESD Simulator System	Noiseken	ESS-B3011	ESS1745636	2020/12/25
ESD GUN	Noiseken	GT-30R	ESS1735275	2020/12/25
Horizontal Coupling Plane(HCP)	QuieTek	HCP AL50	N/A	N/A
Vertical Coupling Plane(VCP)	QuieTek	VCP AL50	N/A	N/A

Note: All equipments that need to calibrate are with calibration period of 1 years.

Radio-frequency electromagnetic field.(Radiated susceptibility) / CB9

Instrument	Manufacturer	Type No.	Serial No	Cal. Date
Signal Generator	Keysight	N5171B	MY53051650	2021/05/28
Power Sensor	R&S	NRP6A	101799/101800	2021/06/01
Stacked double Log.-Per.-Broadband Antenna	SCHWARZBECK	STLP 9129	9129 011	N/A
Power Amplifier	MILMEGA	CBA 1G-1200B	W2346-0918	N/A
Power Amplifier	MILMEGA	AS0860B-50/50	1071482	N/A
Audio Analyzer	R&S	UPV	104461	2021/05/17
Mouth Simulator	B&K	4227	3176440	2020/12/06
Sound Calibrator	B&K	4231	3022024	2020/12/06
Ear Simulator	B&K	4185	3023588	2020/12/06
Conditioning Amplifiers	B&K	Type-2690--0S2	3140676	2020/12/14
Probe Microphone	B&K	4182	3138351	2020/12/13
uniform field calibration	Dekra	N/A	N/A	2021/03/19

Note: All equipments that need to calibrate are with calibration period of 1 years.

Electrical fast transient/burst / SR6

Instrument	Manufacturer	Type No.	Serial No	Cal. Date
EMS TEST System	TESEQ	NSG 3060	1685	2020/08/14
Note: All equipments that need to calibrate are with calibration period of 1 years.				

Surge / SR6

Instrument	Manufacturer	Type No.	Serial No	Cal. Date
EMS TEST System	TESEQ	NSG 3060	1685	2020/08/14
Note: All equipments that need to calibrate are with calibration period of 1 years.				

Radio-frequency common mode(Conducted susceptibility) / SR6

Instrument	Manufacturer	Type No.	Serial No	Cal. Date
TESEQ RF-Generator	TESEQ	NSG 4070B-30	37490	2020/08/13
Note: All equipments that need to calibrate are with calibration period of 1 years.				

Power frequency magnetic field / SR3

Instrument	Manufacturer	Type No.	Serial No	Cal. Date
45kVA Power Source	TESEQ	NSG 1007-45	1847A00294	2020/10/05
Magnetic Loop Coil	Schaffner	INA 702	160	2020/10/14
Magnetic Loop Coil	TESEQ	INA 703	2007	2020/10/14
Note: All equipments that need to calibrate are with calibration period of 1 years.				

2.3. Measurement Uncertainty

Impedance Stabilization Network

The measurement uncertainty is evaluated as ± 3.88 dB.

Radiated Emission(Under 1GHz)

The measurement uncertainty is evaluated as ± 4.22 dB.

Radiated Emission(Above 1GHz)

The measurement uncertainty is evaluated as ± 5.08 dB.

Electrostatic Discharge

As what is concluded in the document from Note2 of clause 5.4.6.2 of ISO/IEC 17025, the requirements for measurement uncertainty in ESD testing are deemed to have been satisfied, and the testing is reported in accordance with the relevant ESD standards. The immunity test signal from the ESD system meet the required specifications in IEC 61000-4-2 through the calibration report with the calibrated uncertainty for the waveform of voltage, current and timing as being 3.0 %, 3.0% and 11%.

Radiated susceptibility

As what is concluded in the document from Note2 of clause 5.4.6.2 of ISO/IEC 17025, the requirements for measurement uncertainty in RS testing are deemed to have been satisfied, and the testing is reported in accordance with the relevant RS standards. The immunity test signal from the RS system meet the required specifications in IEC 61000-4-3 through the calibration for the uniform field strength and monitoring for the test level with the uncertainty evaluation report for the electrical field strength as being 1.72 dB.

Electrical fast transient/burst

As what is concluded in the document from Note2 of clause 5.4.6.2 of ISO/IEC 17025, the requirements for measurement uncertainty in EFT/Burst testing are deemed to have been satisfied, and the testing is reported in accordance with the relevant EFT/Burst standards. The immunity test signal from the EFT/Burst system meet the required specifications in IEC 61000-4-4 through the calibration report with the calibrated uncertainty for the waveform of voltage, frequency and timing as being 4.3 %,0.96% and 5.6%.

Surge

As what is concluded in the document from Note2 of clause 5.4.6.2 of ISO/IEC 17025, the requirements for measurement uncertainty in Surge testing are deemed to have been satisfied, and the testing is reported in accordance with the relevant Surge standards. The immunity test signal from the Surge system meet the required specifications in IEC 61000-4-5 through the calibration report with the calibrated uncertainty for the waveform of voltage, current and timing as being 4.2%, 4.3% and 11%.

Conducted susceptibility

As what is concluded in the document from Note2 of clause 5.4.6.2 of ISO/IEC 17025, the requirements for measurement uncertainty in CS testing are deemed to have been satisfied, and the testing is reported in accordance with the relevant CS standards. The immunity test signal from the CS system meet the required specifications in IEC 61000-4-6 through the calibration for unmodulated signal and monitoring for the test level with the uncertainty evaluation report for the injected modulated signal level through CDN and EM Clamp/Direct Injection as being 4.2 dB and 2.84 dB.

Power frequency magnetic field

As what is concluded in the document from Note2 of clause 5.4.6.2 of ISO/IEC 17025, the requirements for measurement uncertainty in PFM testing are deemed to have been satisfied, and the testing is reported in accordance with the relevant PFM standards. The immunity test signal from the PFM system meet the required specifications in IEC 61000-4-8 through the calibration report with the calibrated uncertainty for the Gauss Meter to verify the output level of magnetic field strength as being 13 %.

2.4. Test Environment

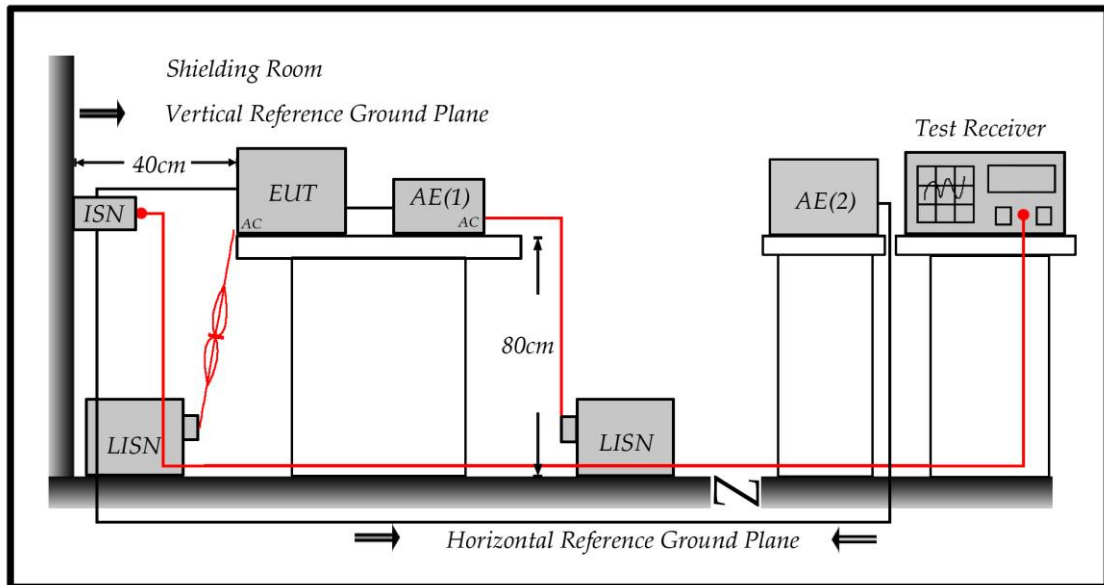
Performed Item	Items	Required
Impedance Stabilization Network	Temperature (°C)	10-40
	Humidity (%RH)	10-90
Radiated Emission	Temperature (°C)	10-40
	Humidity (%RH)	10-90
Electrostatic Discharge	Temperature (°C)	15-35
	Humidity (%RH)	30-60
	Barometric pressure (mbar)	860-1060
Radiated susceptibility	Temperature (°C)	10-40
	Humidity (%RH)	10-90
Electrical fast transient/burst	Temperature (°C)	10-40
	Humidity (%RH)	10-90
Surge	Temperature (°C)	10-40
	Humidity (%RH)	10-90
Conducted susceptibility	Temperature (°C)	10-40
	Humidity (%RH)	10-90
Power frequency magnetic field	Temperature (°C)	10-40
	Humidity (%RH)	10-90

3. Conducted Emissions (Telecommunication Ports)

3.1. Test Specification

According to EN 50121-4 clause 5 and EN 61000-6-4 Table 1

3.2. Test Setup



3.3. Limit

Frequency (MHz)	Voltage Limits		Current Limits	
	QP (dBuV)	AV (dBuV)	QP (dBuV)	AV (dBuV)
0.15 - 0.50	97 – 87	84 – 74	53 – 43	40 – 30
0.50 - 30	87	74	43	30

Remarks:

The limit decreases linearly with the logarithm of the frequency in the range 0.15 MHz~0.50 MHz.

3.4. Test Procedure

Telecommunication Port:

The mains voltage shall be supplied to the EUT via the LISN when the measurement of telecommunication port is performed. The common mode disturbances at the telecommunication port shall be connected to the ISN, which is 150 ohm impedance.

Both alternative cables are tested related to the LCL requested. The measurement range is from 150kHz to 30MHz. The bandwidth of measurement is set to 9kHz.

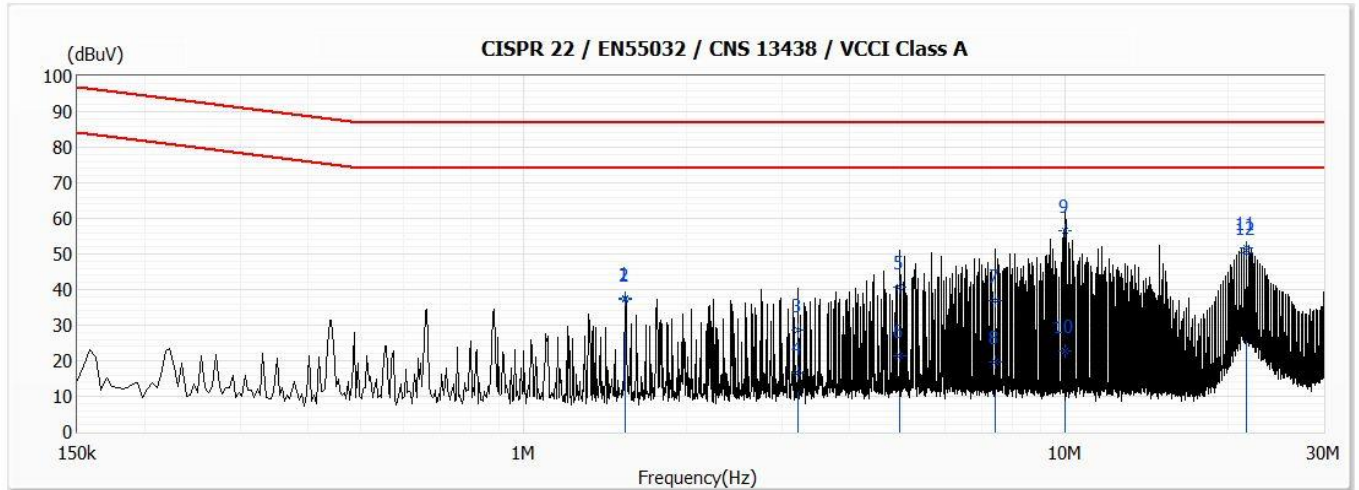
The 75dB LCL ISN is used for cat. 6 cable, the 65dB LCL ISN is used for cat. 5 cable, 55dB LCL ISN is used for cat. 3.

3.5. Deviation from Test Standard

No deviation.

3.6. Test Result

Model No	IB9389-EHT-v2	Site	SR8
Test Voltage	PoE	Test Date	2021/7/2
Test Mode	Mode 1	Engineer	Gary Luo
Phase	L1	Temperature (°C)	26.1
Test Condition	10Mbps	Humidity (%RH)	48

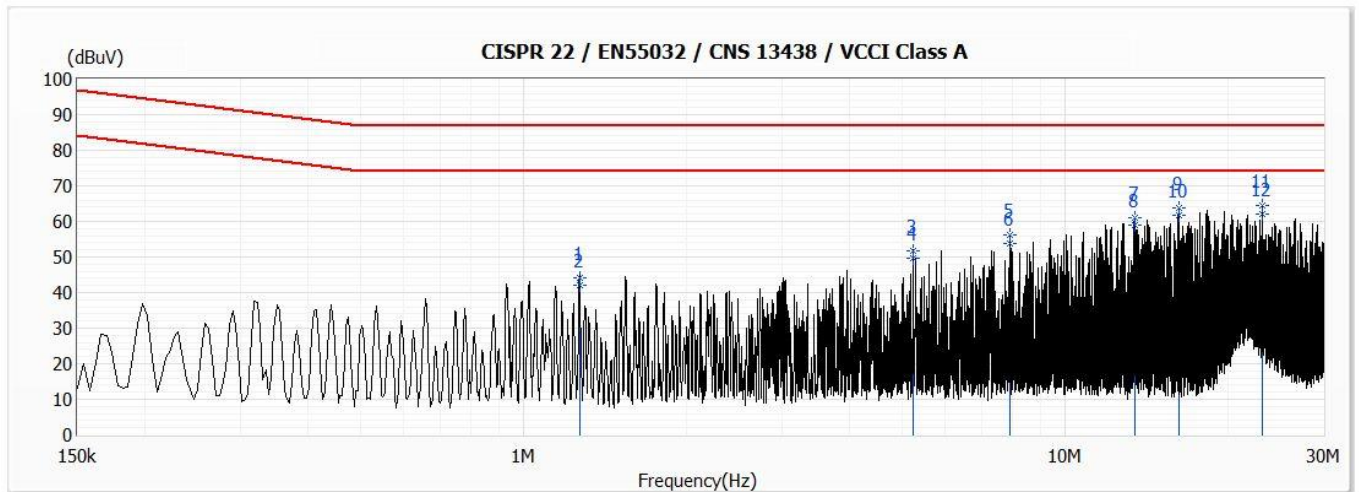


No	Frequency (MHz)	Emission Level (dBuV)	Limit (dBuV)	Margin (dB)	Reading Level (dBuV)	Correct Factor (dB)	Detector Type
1	1.541	37.65	87.00	-49.35	27.80	9.85	QP
2	1.541	37.37	74.00	-36.63	27.52	9.85	AV
3	3.216	28.59	87.00	-58.41	18.76	9.83	QP
4	3.216	16.52	74.00	-57.48	6.69	9.83	AV
5	4.956	40.63	87.00	-46.37	30.79	9.84	QP
6	4.956	21.27	74.00	-52.73	11.43	9.84	AV
7	7.437	36.80	87.00	-50.20	26.91	9.89	QP
8	7.437	19.60	74.00	-54.40	9.71	9.89	AV
9	9.997	56.58	87.00	-30.42	46.65	9.93	QP
10	9.997	22.93	74.00	-51.07	13.00	9.93	AV
11	21.565	51.67	87.00	-35.33	41.45	10.22	QP
*12	21.565	50.29	74.00	-23.71	40.07	10.22	AV

Remark:

1. "*" means this data is the worst emission level;"!" means this data is over limit.
2. Emission Level=Reading Level + Correct Factor(Correct Factor=LISN Factor+Cable Loss).
3. Margin=Emission Level-Limit

Model No	IB9389-EHT-v2	Site	SR8
Test Voltage	PoE	Test Date	2021/7/2
Test Mode	Mode 1	Engineer	Gary Luo
Phase	L1	Temperature (°C)	26.1
Test Condition	100Mbps	Humidity (%RH)	48



No	Frequency (MHz)	Emission Level (dBuV)	Limit (dBuV)	Margin (dB)	Reading Level (dBuV)	Correct Factor (dB)	Detector Type
1	1.267	44.12	87.00	-42.88	34.26	9.86	QP
2	1.267	41.94	74.00	-32.06	32.08	9.86	AV
3	5.237	51.85	87.00	-35.15	42.01	9.84	QP
4	5.237	49.52	74.00	-24.48	39.68	9.84	AV
5	7.923	56.04	87.00	-30.96	46.15	9.89	QP
6	7.923	53.71	74.00	-20.29	43.82	9.89	AV
7	13.419	61.19	87.00	-25.81	51.18	10.01	QP
8	13.419	58.92	74.00	-15.08	48.91	10.01	AV
9	16.228	63.93	87.00	-23.07	53.86	10.07	QP
10	16.228	61.70	74.00	-12.30	51.63	10.07	AV
11	23.128	64.34	87.00	-22.66	54.06	10.28	QP
*12	23.128	62.22	74.00	-11.78	51.94	10.28	AV

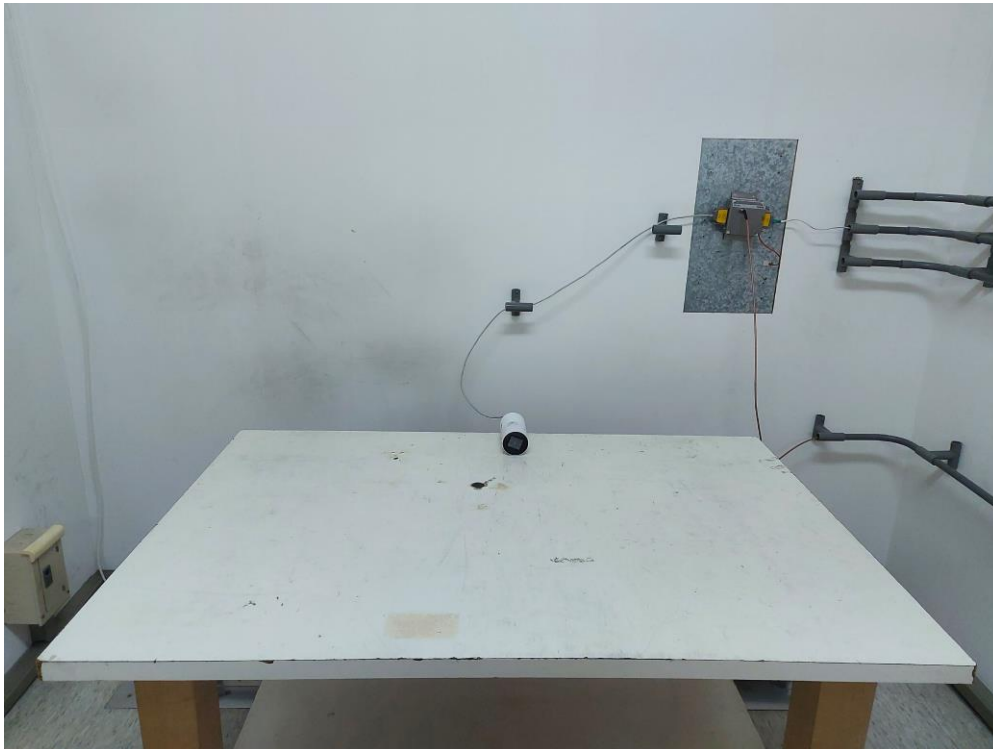
Remark:

1. "*" means this data is the worst emission level;"!" means this data is over limit.
2. Emission Level=Reading Level + Correct Factor(Correct Factor=LISN Factor+Cable Loss).
3. Margin=Emission Level-Limit

3.7. Test Photograph

Test Mode : Mode 1: IB9389-EHT-v2, PoE Mode

Description : Front View of ISN Test



Test Mode : Mode 1: IB9389-EHT-v2, PoE Mode

Description : Back View of ISN Test



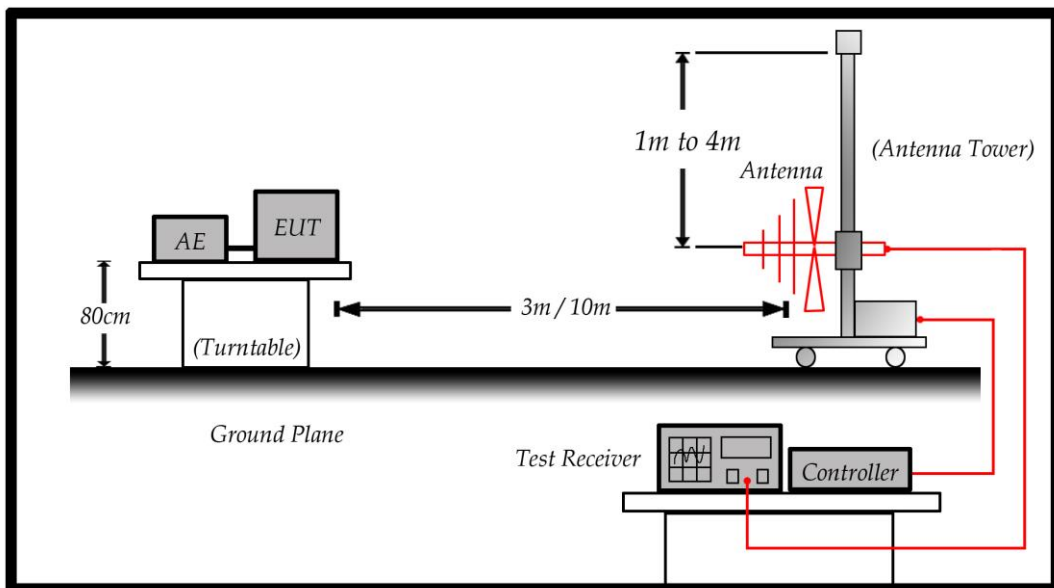
4. Radiated Emission

4.1. Test Specification

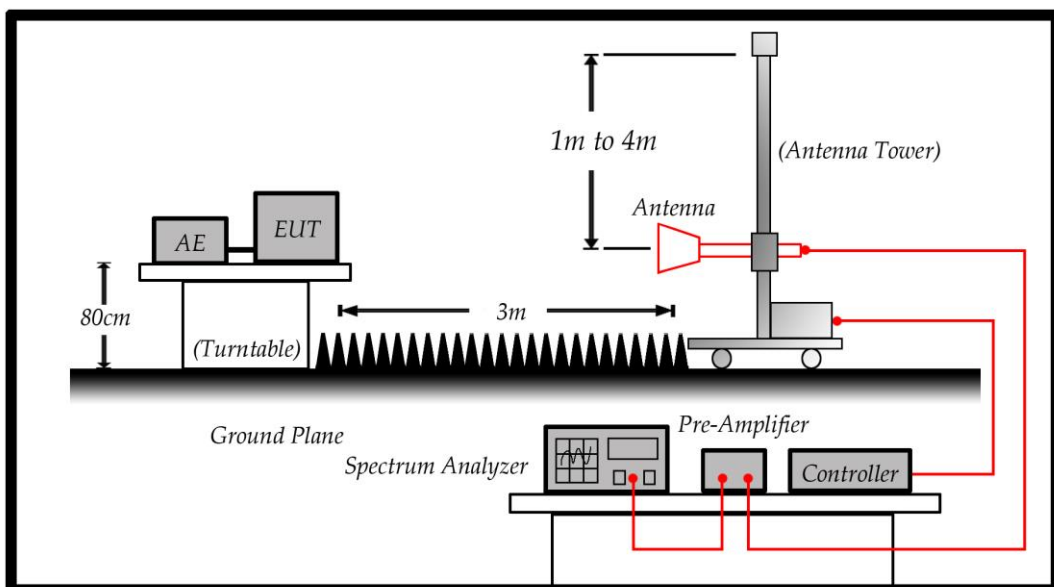
According to EN 50121-4 clause 5 and EN 61000-6-4 Table 1

4.2. Test Setup

Under 1GHz Test Setup:



Above 1GHz Test Setup:



4.3. Limit

Limits		
Frequency MHz	Distance (m)	dBuV/m
30 – 230	10	40
230 – 1000	10	47

Limits			
Frequency (GHz)	Distance (m)	Peak (dBuV/m)	Average (dBuV/m)
1 – 3	3	76	56
3 – 6	3	80	60

Remark:

1. The tighter limit shall apply at the edge between two frequency bands.
2. Distance refers to the distance in meters between the measuring instrument antenna and the closed point of any part of the device or system.

Highest frequency generated or used in the device or on which the device operates or tunes (MHz)	Upper frequency of measurement range (MHz)
Below 108	1000
108 – 500	2000
500 – 1000	5000
Above 1000	5 th harmonic of the highest frequency or 6 GHz, whichever is lower

4.4. Test Procedure

According to CISPR 16-2-3.

The EUT and its simulators are placed on a turn table which is 0.8 meter above ground. The turn table can rotate 360 degrees to determine the position of the maximum emission level. The EUT was positioned such that the distance from antenna to the EUT was 10 meters. The antenna can move up and down between 1 meter and 4 meters to find out the maximum emission level.

Both horizontal and vertical polarization of the antenna are set on measurement. In order to find the maximum emission, all of the interface cables must be manipulated on radiated measurement.

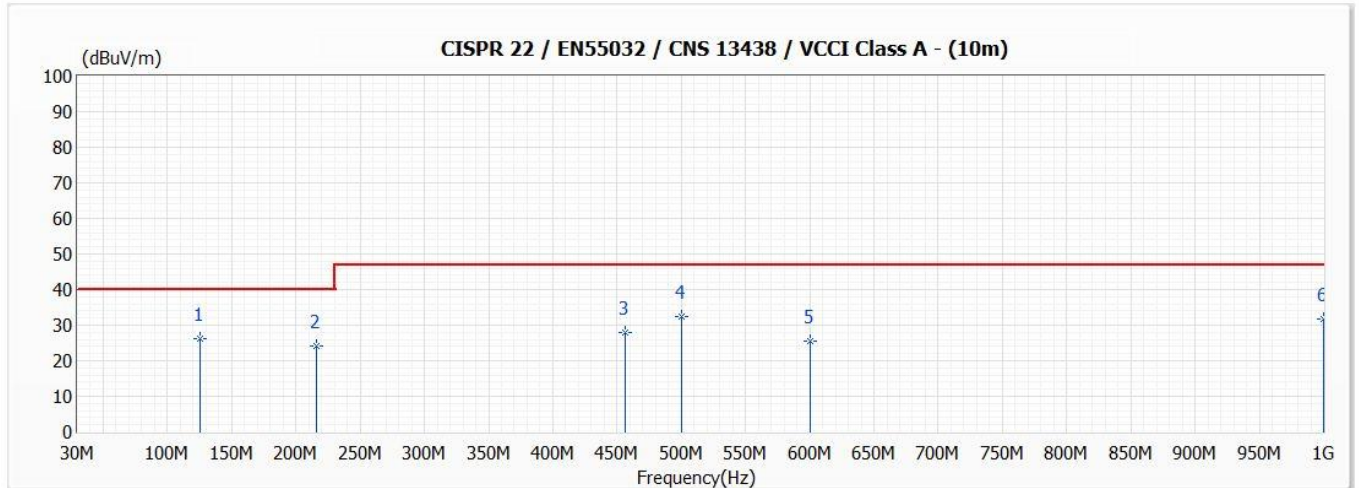
Radiated emissions were investigated over the frequency range from 30MHz to 1GHz using a receiver bandwidth of 120kHz. Radiated was performed at an antenna to EUT distance of 10 meters.

4.5. Deviation from Test Standard

No deviation.

4.6. Test Result

Model No	IB9389-EHT-v2	Site	SITE2
Test Voltage	PoE	Test Date	2021/7/2
Test Mode	Mode 1	Engineer	Edward Chi
Polarity	Horizontal	Temperature (°C)	27.5
Test Condition	--	Humidity (%RH)	58.8

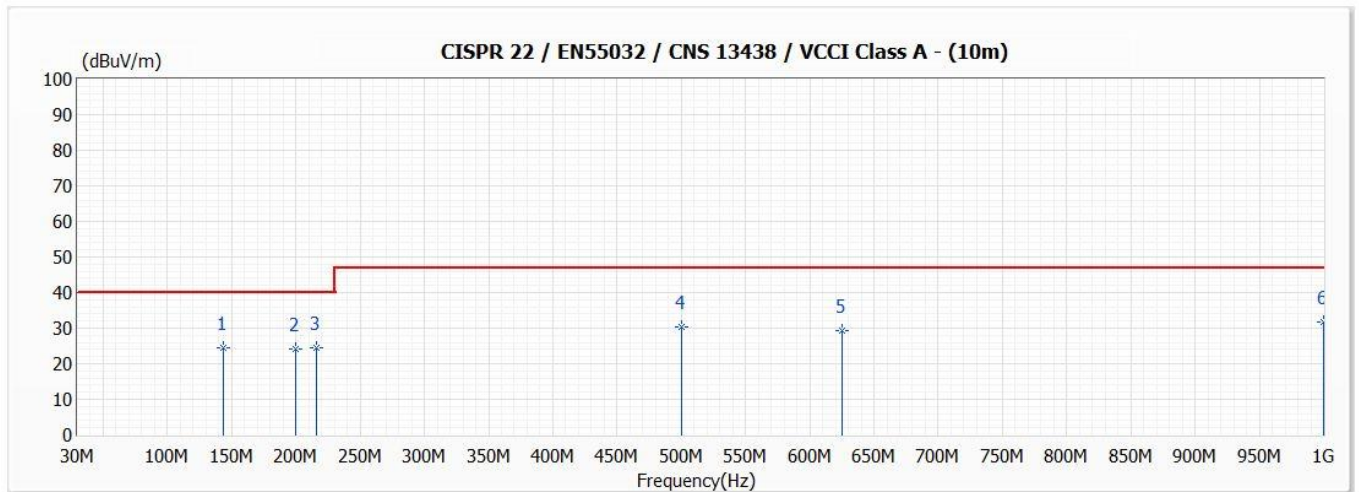


No	Frequency (MHz)	Emission Level (dBuV/m)	Limit (dBuV/m)	Margin (dB)	Reading Level (dBuV)	Correct Factor (dB/m)	Ant Pos (cm)	TT Pos (deg)	Detector Type
* 1	125.000	26.11	40.00	-13.89	38.30	-12.19	370	164	QP
2	216.000	24.29	40.00	-15.71	38.70	-14.41	370	-91	QP
3	456.000	28.09	47.00	-18.91	32.90	-4.81	200	61	QP
4	500.000	32.40	47.00	-14.60	36.30	-3.90	200	87	QP
5	600.000	25.44	47.00	-21.56	27.10	-1.66	100	-81	QP
6	1000.000	31.59	47.00	-15.41	26.70	4.89	100	-43	QP

Remark:

1. "*" means this data is the worst emission level;"!" means this data is over limit.
2. Emission Level=Reading Level + Correct Factor(Correct Factor=Ant Factor+Cable Loss-Pre Amp).
3. Margin=Emission Level-Limit.

Model No	IB9389-EHT-v2	Site	SITE2
Test Voltage	PoE	Test Date	2021/7/2
Test Mode	Mode 1	Engineer	Edward Chi
Polarity	Vertical	Temperature (°C)	27.5
Test Condition	--	Humidity (%RH)	58.8

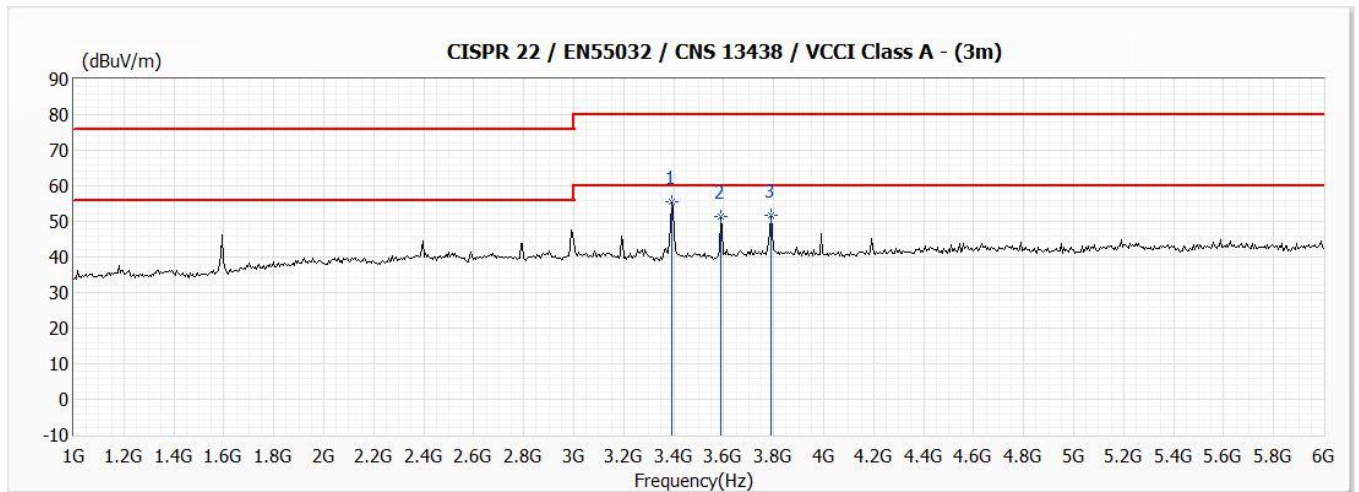


No	Frequency (MHz)	Emission Level (dBuV/m)	Limit (dBuV/m)	Margin (dB)	Reading Level (dBuV)	Correct Factor (dB/m)	Ant Pos (cm)	TT Pos (deg)	Detector Type
1	143.300	24.47	40.00	-15.53	37.50	-13.03	100	97	QP
2	200.000	24.11	40.00	-15.89	38.40	-14.29	100	193	QP
3	216.000	24.49	40.00	-15.51	38.90	-14.41	100	-77	QP
4	500.000	30.50	47.00	-16.50	34.40	-3.90	300	-182	QP
5	625.000	29.48	47.00	-17.52	30.50	-1.02	250	17	QP
* 6	1000.000	31.59	47.00	-15.41	26.70	4.89	150	-49	QP

Remark:

1. "*" means this data is the worst emission level; "!" means this data is over limit.
2. Emission Level=Reading Level + Correct Factor(Correct Factor=Ant Factor+Cable Loss-Pre Amp).
3. Margin=Emission Level-Limit.

Model No	IB9389-EHT-v2	Site	CB7
Test Voltage	PoE	Test Date	2021/7/2
Test Mode	Mode 1	Engineer	Nilk Chen
Polarity	Horizontal	Temperature (°C)	27.1
Test Condition	--	Humidity (%RH)	55

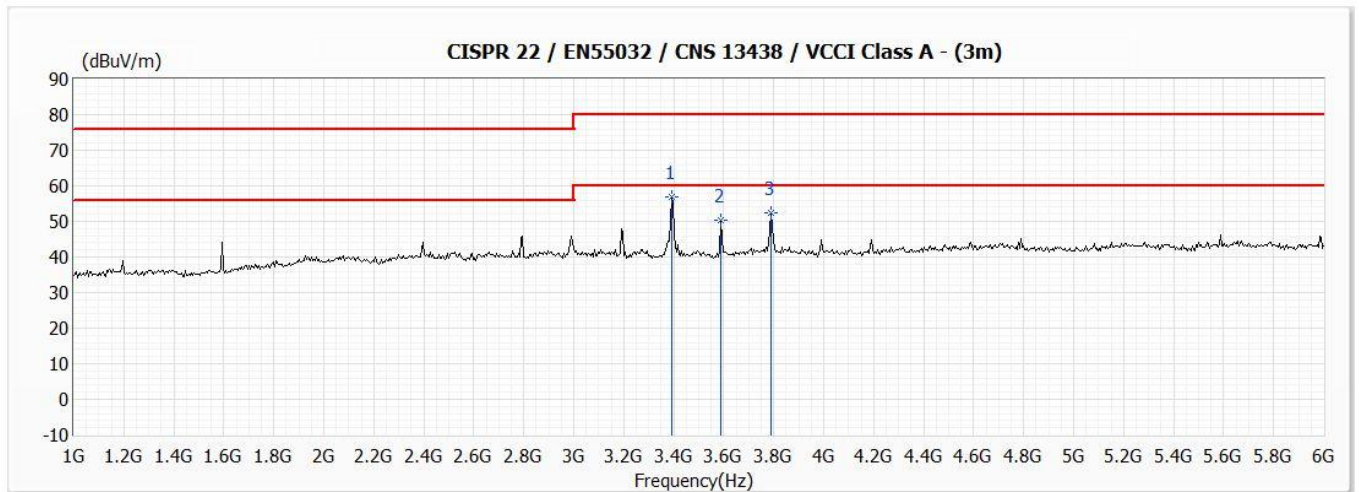


No	Frequency (MHz)	Emission Level (dBuV/m)	Limit (dBuV/m)	Margin (dB)	Reading Level (dBuV)	Correct Factor (dB/m)	Ant Pos (cm)	TT Pos (deg)	Detector Type
* 1	3390.000	55.51	80.00	-24.49	60.25	-4.74	170	185	PK
2	3590.000	51.51	80.00	-28.49	55.72	-4.21	110	-137	PK
3	3790.000	51.77	80.00	-28.23	55.25	-3.48	100	41	PK

Remark:

1. "*" means this data is the worst emission level; "!" means this data is over limit.
2. Emission Level=Reading Level + Correct Factor (Correct Factor=Ant Factor+Cable Loss-Pre Amp).
3. Margin= Emission Level-Limit.
4. The above 1 GHz test. When PEAK measures level less than AV limit by 20 dBuV, its average is not measured separately.

Model No	IB9389-EHT-v2	Site	CB7
Test Voltage	PoE	Test Date	2021/7/2
Test Mode	Mode 1	Engineer	Nilk Chen
Polarity	Vertical	Temperature (°C)	27.1
Test Condition	--	Humidity (%RH)	55



No	Frequency (MHz)	Emission Level (dBuV/m)	Limit (dBuV/m)	Margin (dB)	Reading Level (dBuV)	Correct Factor (dB/m)	Ant Pos (cm)	TT Pos (deg)	Detector Type
* 1	3390.000	56.76	80.00	-23.24	61.50	-4.74	100	6	PK
2	3590.000	50.36	80.00	-29.64	54.57	-4.21	150	-94	PK
3	3790.000	52.28	80.00	-27.72	55.76	-3.48	120	74	PK

Remark:

1. "*" means this data is the worst emission level; "!" means this data is over limit.
2. Emission Level=Reading Level + Correct Factor (Correct Factor=Ant Factor+Cable Loss-Pre Amp).
3. Margin= Emission Level-Limit.
4. The above 1 GHz test. When PEAK measures level less than AV limit by 20 dBuV, its average is not measured separately.

4.7. Test Photograph

Test Mode : Mode 1: IB9389-EHT-v2, PoE Mode

Description : Front View of Radiated Test



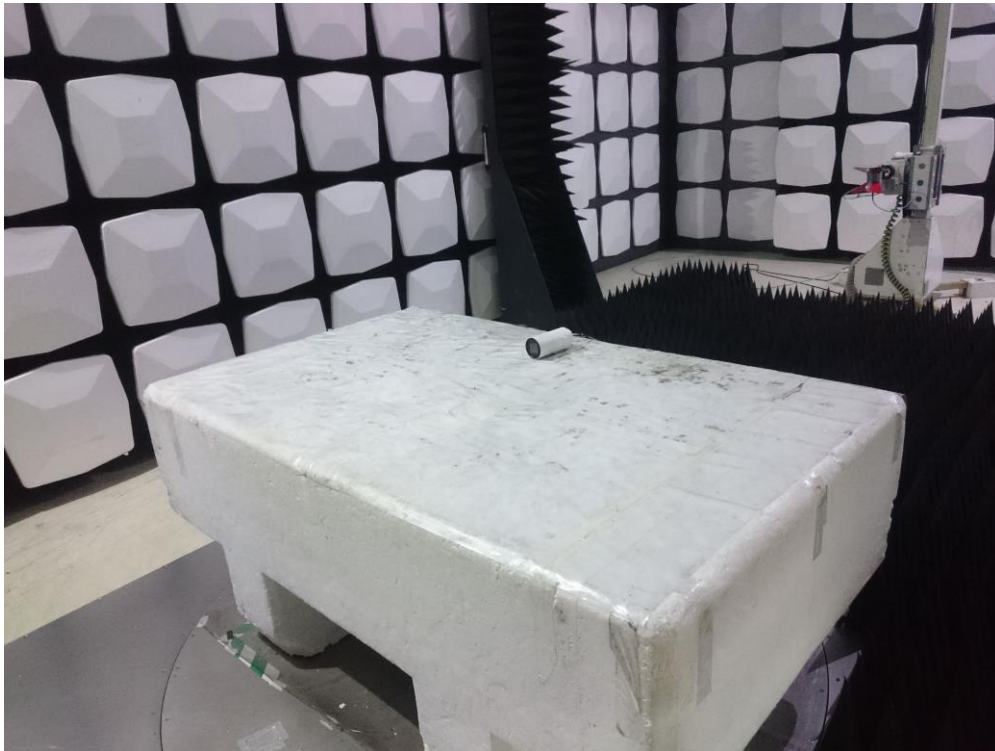
Test Mode : Mode 1: IB9389-EHT-v2, PoE Mode

Description : Back View of Radiated Test



Test Mode : Mode 1: IB9389-EHT-v2, PoE Mode

Description : Front View of High Frequency Radiated Test

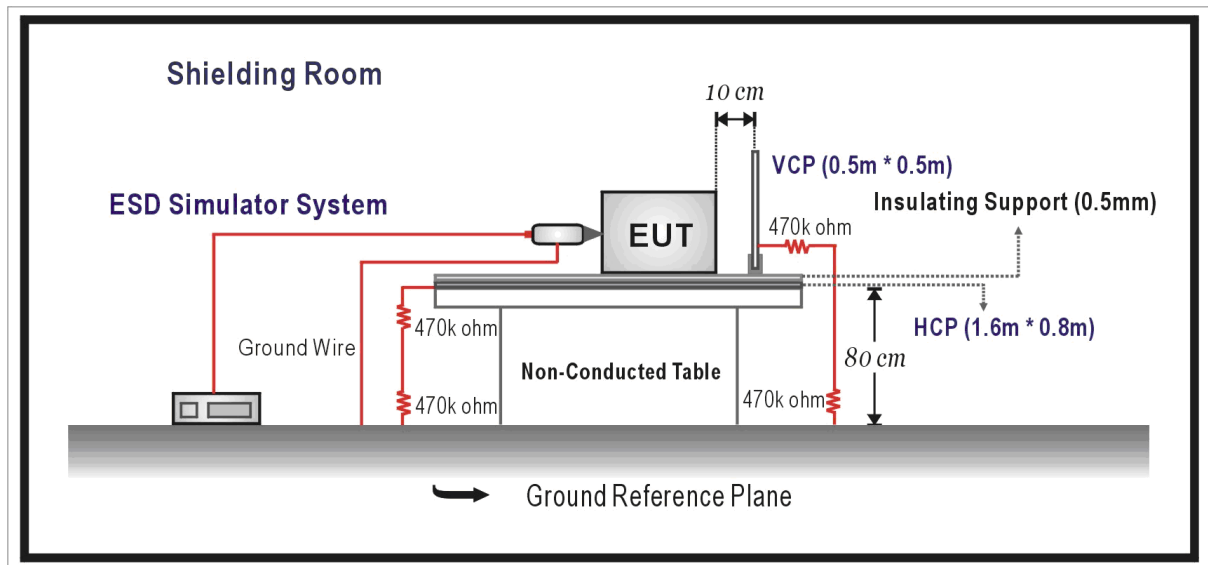


5. Electrostatic Discharge

5.1. Test Specification

According to EN 50121-4 clause 6.

5.2. Test Setup



5.3. Limit

Item	Environmental Phenomena	Units	Test Specification	Performance Criteria
Enclosure Port				
	Electrostatic Discharge	kV(Charge Voltage)	±8 Air Discharge ±6 Contact Discharge	B

5.4. Test Procedure

According to EN 61000-4-2.

Direct application of discharges to the EUT:

Contact discharge was applied only to conductive surfaces of the EUT.

Air discharges were applied only to non-conductive surfaces of the EUT.

During the test, it was performed with single discharges. For the single discharge time between successive single discharges will be keep longer 1 second. It was at least ten single discharges with positive and negative at the same selected point.

The selected point, which was performed with electrostatic discharge, was marked on the red label of the EUT.

Indirect application of discharges to the EUT:

Vertical Coupling Plane (VCP):

The coupling plane, of dimensions 0.5m x 0.5m, is placed parallel to, and positioned at a distance 0.1m from, the EUT, with the Discharge Electrode touching the coupling plane.

The four faces of the EUT will be performed with electrostatic discharge. It was at least ten single discharges with positive and negative at the same selected point.

Horizontal Coupling Plane (HCP):

The coupling plane is placed under to the EUT. The generator shall be positioned vertically at a distance of 0.1m from the EUT, with the Discharge Electrode touching the coupling plane.

The four faces of the EUT will be performed with electrostatic discharge. It was at least ten single discharges with positive and negative at the same selected point.

5.5. Deviation from Test Standard

No deviation..

5.6. Test Result

Product	Network Camera		
Test Item	Electrostatic Discharge		
Test Mode	Mode 1: IB9389-EHT-v2, PoE Mode		
Date of Test	2021/07/13	Test Site	No.6 Shielded Room
Environmental	21(°C) 49(%RH) 995(mbar)	Engineer	Ken Pan

Item	Amount of Discharge	Voltage	Required Criteria	Complied To Criteria (A,B,C)	Results
Air Discharge	10	+8kV	B	B	Pass
	10	-8kV	B	B	Pass
Contact Discharge	10	+6kV	B	B	Pass
	10	-6kV	B	B	Pass
Indirect Discharge (HCP)	10	+6kV	B	A	Pass
	10	-6kV	B	A	Pass
Indirect Discharge (VCP)	10	+6kV	B	A	Pass
	10	-6kV	B	A	Pass

Note:

The testing performed is from lowest level up to the highest level as required by standard, but only highest level is shown on the report.

NR: No Requirement

- Meet criteria A: Operate as intended during and after the test
- Meet criteria B: Operate as intended after the test
- Meet criteria C: Loss/Error of function
- Additional Information
 - EUT stopped operation and could / could not be reset by operator at ____ kV.
 - No false alarms or other malfunctions were observed during or after the test.

Product	Network Camera		
Test Item	Electrostatic Discharge		
Test Mode	Mode 1: IB9389-EHT-v2, PoE Mode		
Date of Test	2021/07/13	Test Site	No.6 Shielded Room
Environmental	21(°C) 49(%RH) 995(mbar)	Engineer	Ken Pan

Item	Amount of Discharge	Voltage	Required Criteria	Complied To Criteria (A,B,C)	Results
Air Discharge	10	+10kV	B	B	Pass
	10	-10kV	B	B	Pass
Contact Discharge	10	+6kV	B	B	Pass
	10	-6kV	B	B	Pass
Indirect Discharge (HCP)	10	+6kV	B	A	Pass
	10	-6kV	B	A	Pass
Indirect Discharge (VCP)	10	+6kV	B	A	Pass
	10	-6kV	B	A	Pass

Note:

The testing performed is from lowest level up to the highest level as required by standard, but only highest level is shown on the report.

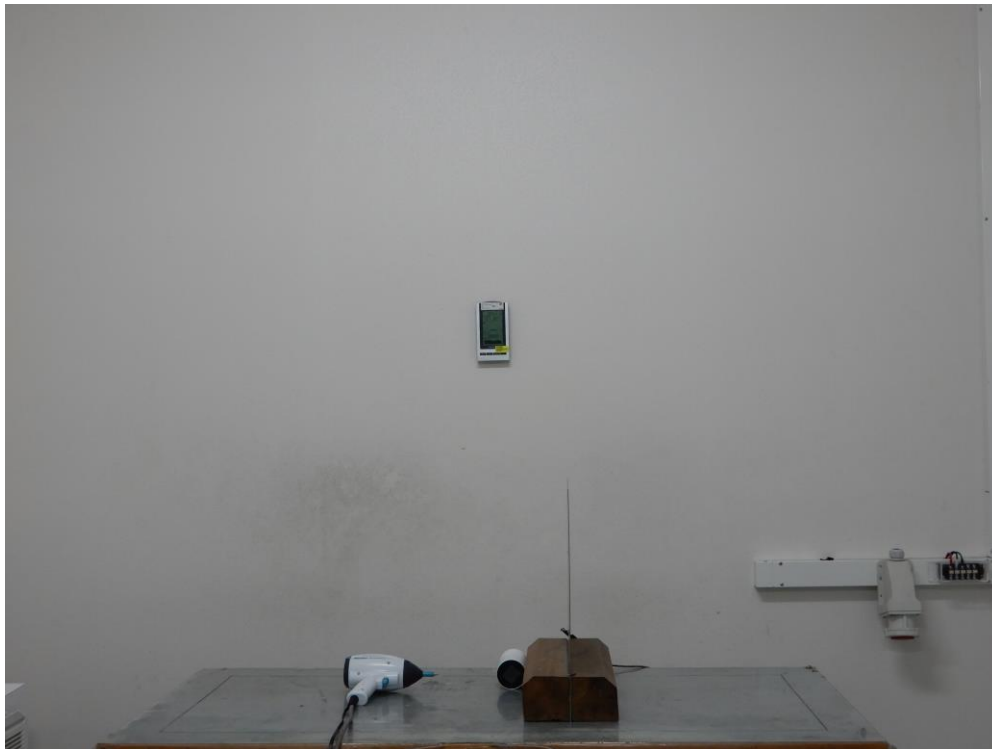
NR: No Requirement

- Meet criteria A: Operate as intended during and after the test
- Meet criteria B: Operate as intended after the test
- Meet criteria C: Loss/Error of function
- Additional Information
 - EUT stopped operation and could / could not be reset by operator at ____ kV.
 - No false alarms or other malfunctions were observed during or after the test.

5.7. Test Photograph

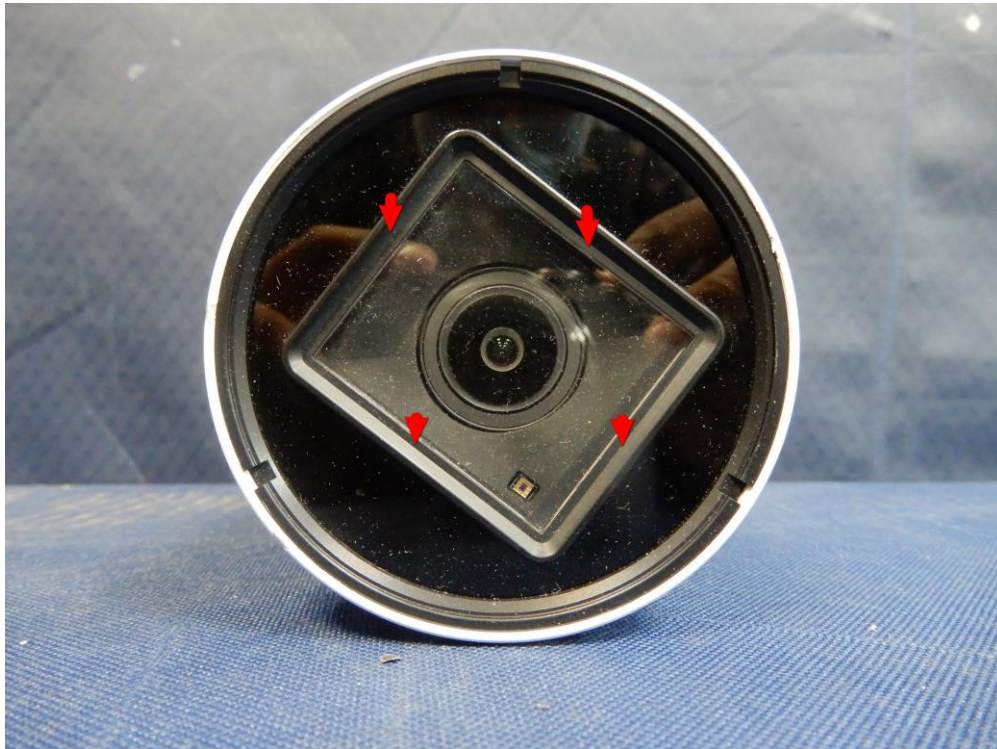
Test Mode : Mode 1: IB9389-EHT-v2, PoE Mode

Description : ESD Test Setup

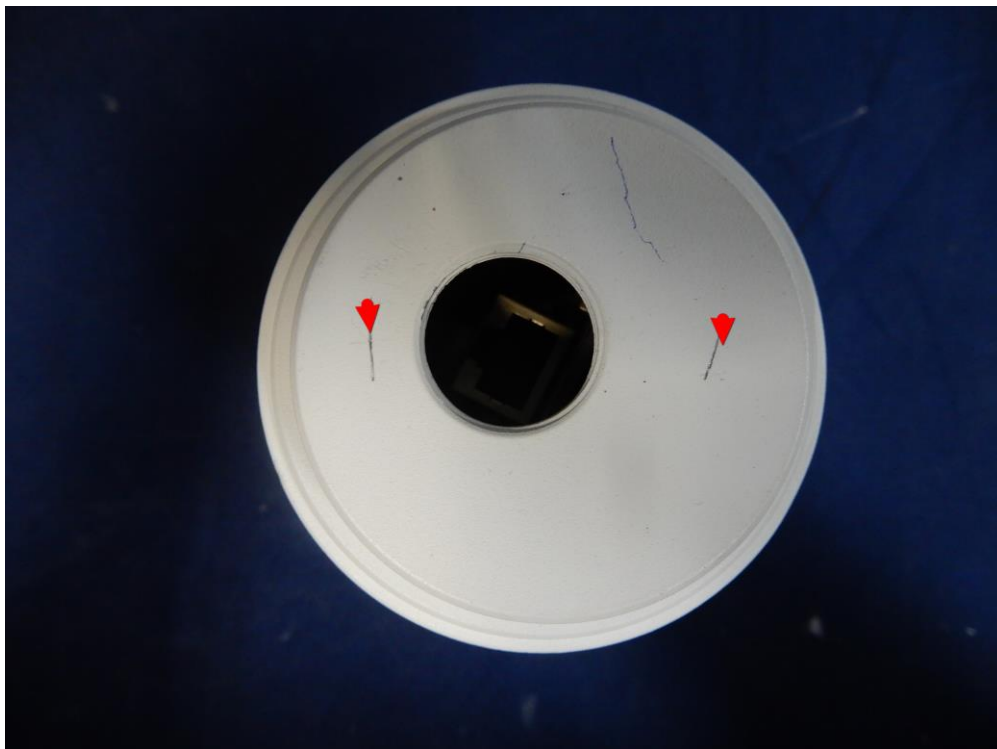


5.8. EUT to dot photo for ESD test

Test dot : (Air Discharge)



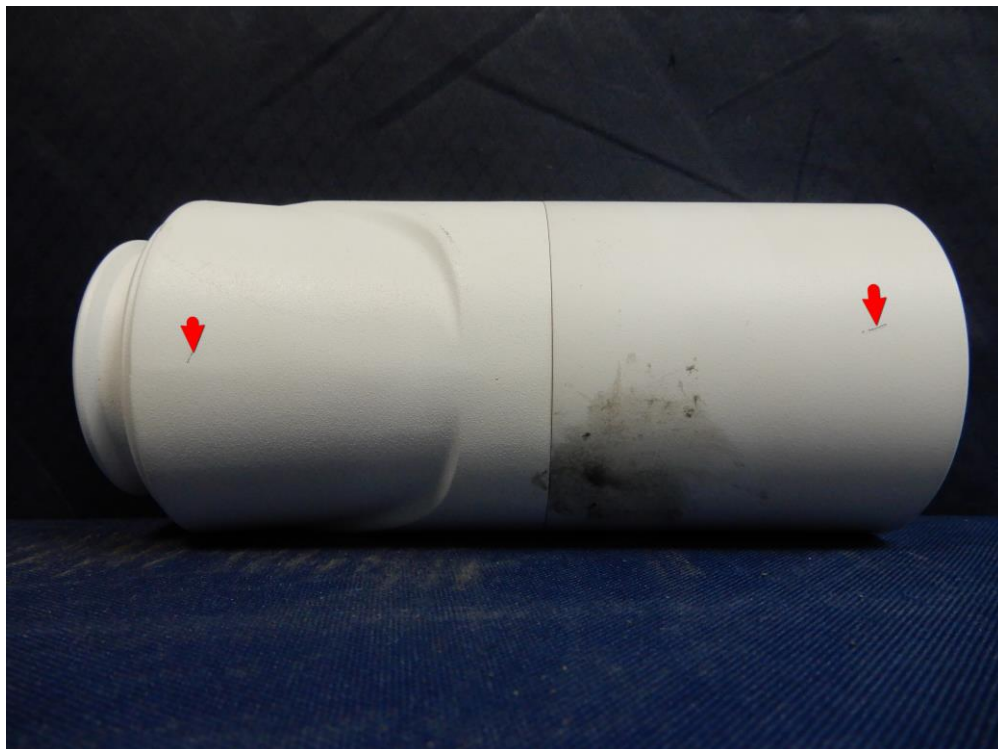
Test dot : (Contact Discharge)



Test dot : (Contact Discharge)



Test dot : (Contact Discharge)



Test dot : (Contact Discharge)



Test dot : (Contact Discharge)

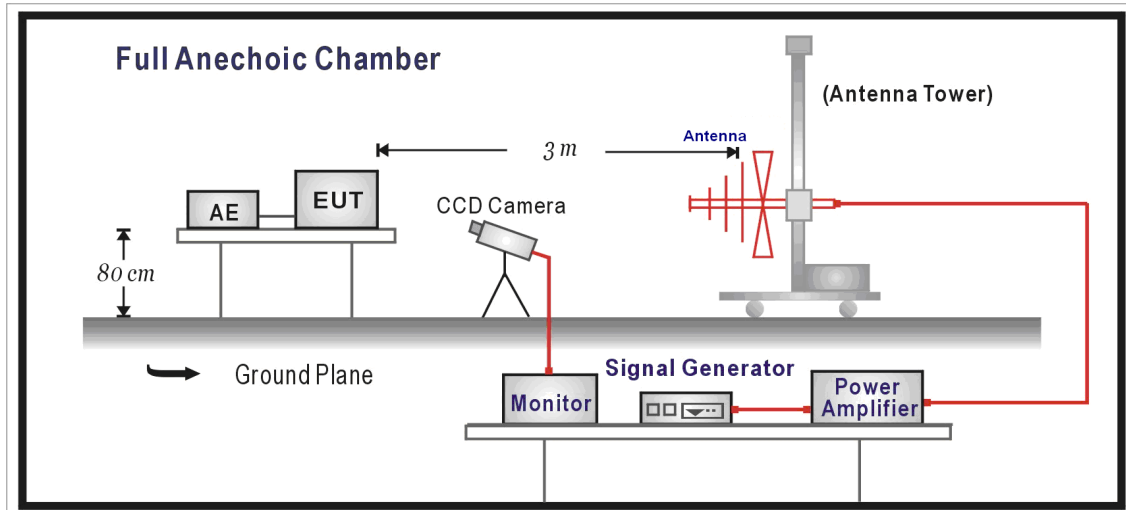


6. Radiated Susceptibility

6.1. Test Specification

According to EN 50121-4 clause 6.

6.2. Test Setup



6.3. Limit

Item	Environmental Phenomena	Units	Test Specification	Performance Criteria
Enclosure Port				
Radio-Frequency	Electromagnetic Field	MHz	80-800	A
Amplitude Modulated	V/m(Un-modulated, rms)		10	
	% AM (1kHz)		80	
Radio-Frequency	Electromagnetic Field	MHz	800-1000	A
Amplitude Modulated	V/m(Un-modulated, rms)		20	
	% AM (1kHz)		80	
Radio-Frequency	Electromagnetic Field	MHz	1400-2000	A
Amplitude Modulated	V/m(Un-modulated, rms)		10	
	% AM (1kHz)		80	
Radio-Frequency	Electromagnetic Field	MHz	2000-2700	A
Amplitude Modulated	V/m(Un-modulated, rms)		5	
	% AM (1kHz)		80	
Radio-Frequency	Electromagnetic Field	MHz	5100-6000	A
Amplitude Modulated	V/m(Un-modulated, rms)		3	
	% AM (1kHz)		80	

6.4. Test Procedure

According to EN 61000-4-3

The EUT and load, which are placed on a table that is 0.8 meter above ground, are placed with one coincident with the calibration plane such that the distance from antenna to the EUT was 3 meters.

Both horizontal and vertical polarization of the antenna and four sides of the EUT are set on measurement.

In order to judge the EUT performance, a CCD camera is used to monitor EUT screen.

All the scanning conditions are as follows:

Condition of Test	Remarks
1. Field Strength	5, 10, 20V/m
2. Radiated Signal	AM 80% Modulated with 1kHz
3. Scanning Frequency	80MHz-800MHz for 10V/m 800MHz-1000MHz for 20V/m 1400MHz-2000MHz for 10V/m 2000MHz-2700MHz for 5V/m 5100MHz-6000MHz for 3V/m
4 Dwell Time	3 Seconds
5. Frequency step size Δf :	1%
6. The rate of Swept of Frequency	1.5×10^{-3} decades/s

6.5. Deviation from Test Standard

No deviation.

6.6. Test Result

Product	Network Camera		
Test Item	Radiated susceptibility		
Test Mode	Mode 1: IB9389-EHT-v2, PoE Mode		
Date of Test	2021/07/13	Test Site	Chamber 9
Environmental	22(°C) 51(%RH)	Engineer	Ken Pan

Frequency (MHz)	Position (Angle)	Polarity (H or V)	Field Strength (V/m)	Required Criteria	Complied To Criteria (A,B,C)	Results
80-800	0°	H	10	A	A	PASS
80-800	0°	V	10	A	A	PASS
80-800	90°	H	10	A	A	PASS
80-800	90°	V	10	A	A	PASS
80-800	180°	H	10	A	A	PASS
80-800	180°	V	10	A	A	PASS
80-800	270°	H	10	A	A	PASS
80-800	270°	V	10	A	A	PASS
800-1000	0°	H	20	A	A	PASS
800-1000	0°	V	20	A	A	PASS
800-1000	90°	H	20	A	A	PASS
800-1000	90°	V	20	A	A	PASS
800-1000	180°	H	20	A	A	PASS
800-1000	180°	V	20	A	A	PASS
800-1000	270°	H	20	A	A	PASS
800-1000	270°	V	20	A	A	PASS
1400-2000	0°	H	10	A	A	PASS
1400-2000	0°	V	10	A	A	PASS
1400-2000	90°	H	10	A	A	PASS
1400-2000	90°	V	10	A	A	PASS
1400-2000	180°	H	10	A	A	PASS
1400-2000	180°	V	10	A	A	PASS
1400-2000	270°	H	10	A	A	PASS
1400-2000	270°	V	10	A	A	PASS
2000-2700	0°	H	5	A	A	PASS
2000-2700	0°	V	5	A	A	PASS
2000-2700	90°	H	5	A	A	PASS
2000-2700	90°	V	5	A	A	PASS
2000-2700	180°	H	5	A	A	PASS
2000-2700	180°	V	5	A	A	PASS
2000-2700	270°	H	5	A	A	PASS
2000-2700	270°	V	5	A	A	PASS
5100-6000	0°	H	3	A	A	PASS
5100-6000	0°	V	3	A	A	PASS
5100-6000	90°	H	3	A	A	PASS
5100-6000	90°	V	3	A	A	PASS
5100-6000	180°	H	3	A	A	PASS
5100-6000	180°	V	3	A	A	PASS
5100-6000	270°	H	3	A	A	PASS
5100-6000	270°	V	3	A	A	PASS

Note:

The testing performed is from lowest level up to the highest level as required by standard, but only highest level is shown on the report.

- Meet criteria A: Operate as intended during and after the test
- Meet criteria B: Operate as intended after the test
- Meet criteria C: Loss/Error of function
- Additional Information
 - There was no observable degradation in performance.
 - EUT stopped operation and could / could not be reset by operator at _____ V/m at frequency _____MHz.
- No false alarms or other malfunctions were observed during or after the test.

6.7. Test Photograph

Test Mode : Mode 1: IB9389-EHT-v2, PoE Mode

Description : Front View of Radiated Susceptibility Test Setup



Test Mode : Mode 1: IB9389-EHT-v2, PoE Mode

Description : Back View of Radiated Susceptibility Test Setup



Test Mode : Mode 1: IB9389-EHT-v2, PoE Mode

Description : Left View of Radiated Susceptibility Test Setup



Test Mode : Mode 1: IB9389-EHT-v2, PoE Mode

Description : Right View of Radiated Susceptibility Test Setup



Test Mode : Mode 1: IB9389-EHT-v2, PoE Mode

Description : Top View of Radiated Susceptibility Test Setup



Test Mode : Mode 1: IB9389-EHT-v2, PoE Mode

Description : Bottom View of Radiated Susceptibility Test Setup

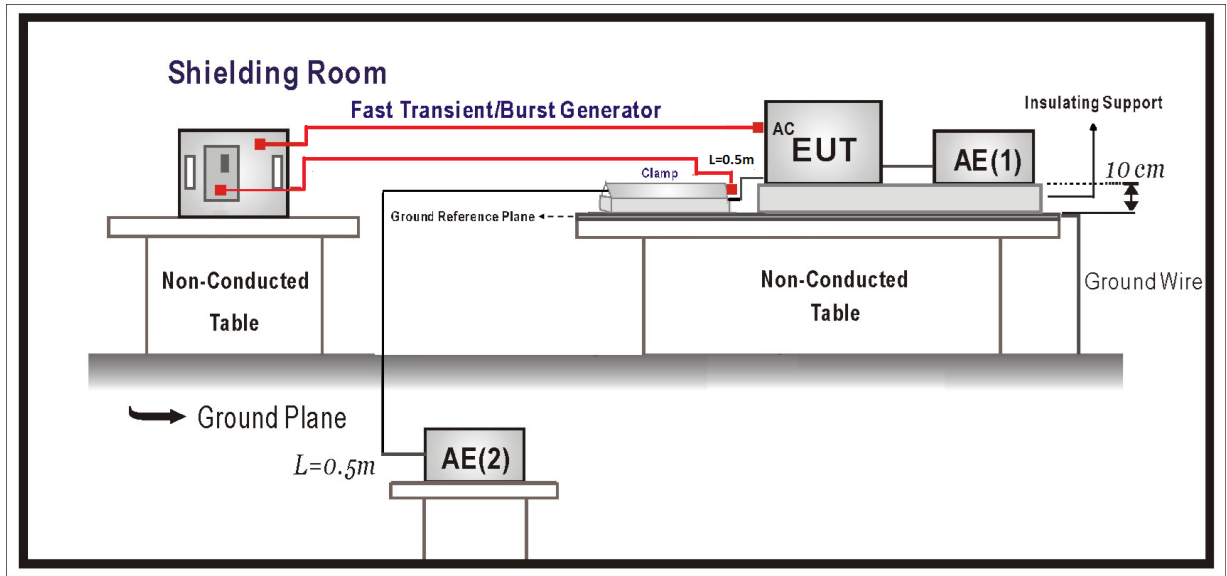


7. Electrical Fast Transient/Burst

7.1. Test Specification

According to EN 50121-4 clause 6.

7.2. Test Setup



7.3. Limit

Item	Environmental Phenomena	Units	Test Specificatio	Performance Criteria
Signal and Telecommunication Ports				
	Fast Transients Common Mode	kV (Peak) Tr/Th ns Rep. Frequency kHz	± 2 5/50 5	A
Input DC Power Ports				
	Fast Transients Common Mode	kV (Peak) Tr/Th ns Rep. Frequency kHz	± 2 5/50 5	A
Input AC Power Ports				
	Fast Transients Common Mode	kV (Peak) Tr/Th ns Rep. Frequency kHz	± 2 5/50 5	A

7.4. Test Procedure

According to EN 61000-4-4.

The EUT is placed on a table that is 0.8 meter height. A ground reference plane is placed on the table, and uses a 0.1m insulation between the EUT and ground reference plane.

The minimum area of the ground reference plane is 1m*1m, and 0.65mm thick min, and projected beyond the EUT by at least 0.1m on all sides.

Test on I/O and communication ports:

The EFT interference signal is through a coupling clamp device couples to the signal and control lines of the EUT with burst noise for 1 minute.

Test on power supply ports:

The EUT is connected to the power mains through a coupling device that directly couples the EFT/B interference signal.

Each of the Line and Neutral conductors is impressed with burst noise for 1 minute.

The length of the signal and power lines between the coupling device and the EUT is 0.5m.

7.5. Deviation from Test Standard

No deviation

7.6. Test Result

Product	Network Camera		
Test Item	Electrical fast transient/burst		
Test Mode	Mode 1: IB9389-EHT-v2, PoE Mode		
Date of Test	2021/07/13	Test Site	No.6 Shielded Room
Environmental	22(°C) 52(%RH)	Engineer	Ken Pan

Inject Line	Polarity	Voltage kV	Inject Time (Second)	Inject Method	Required Criteria	Complied to Criteria	Result
LAN	±	2 kV	60	Clamp	A	A	PASS

Note:

The testing performed is from lowest level up to the highest level as required by standard, but only highest level is shown on the report.

- Meet criteria A : Operate as intended during and after the test
- Meet criteria B : Operate as intended after the test
- Meet criteria C : Loss/Error of function
- Additional Information
 - EUT stopped operation and could / could not be reset by operator at _____ kV of Line _____.
- No false alarms or other malfunctions were observed during or after the test.

7.7. Test Photograph

Test Mode : Mode 1: IB9389-EHT-v2, PoE Mode

Description : EFT/B Test Setup-Clamp

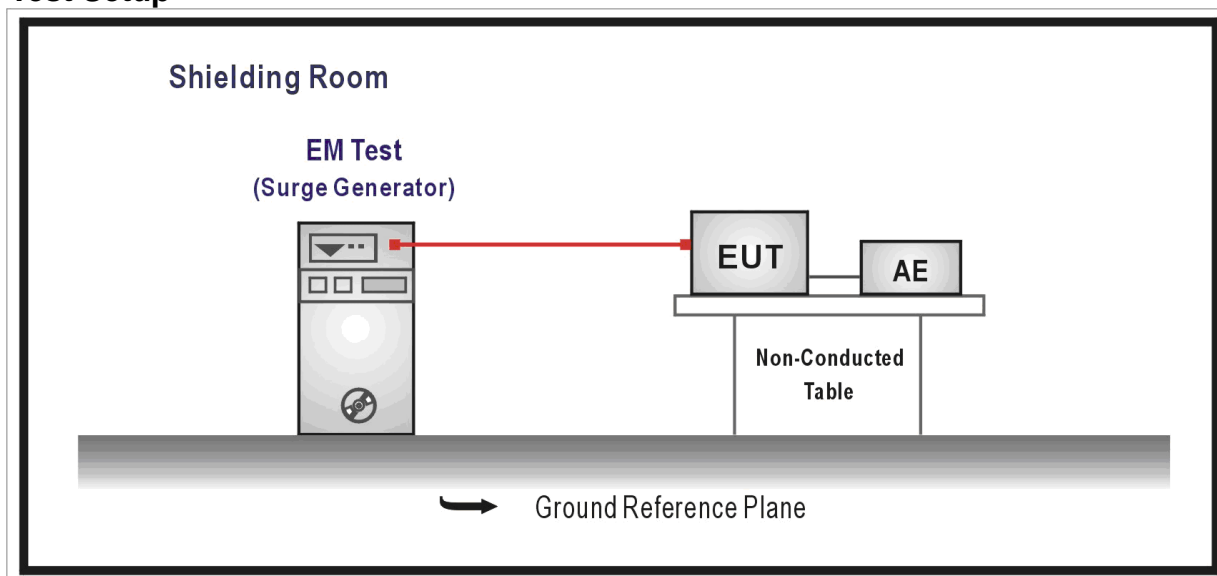


8. Surge

8.1. Test Specification

According to EN 50121-4 clause 6.

8.2. Test Setup



8.3. Limit

Item	Environmental Phenomena	Units	Test Specification	Performance Criteria
Signal Ports and Telecommunication Ports(See 1) and 2))				
	Surges	Tr/Th us	1.2/50 (8/20)	B
	Line to Line	kV	± 1	
	Line to Ground	kV	± 2	
		Output Impedance Ω	42	
		Coupling Capacitance μF	0.5	
Input DC Power Ports				
	Surges	Tr/Th us	1.2/50 (8/20)	B
	Line to Line	kV	± 1	
	Line to Ground	KV	± 2	
		Output Impedance Ω	42	
		Coupling Capacitance μF	0.5	
Input AC Power Ports				
	Surges	Tr/Th us	1.2/50 (8/20)	B
	Line to Line	kV	± 1	
	Line to Ground	kV	± 2	

Notes:

- 1) For telecommunication ports and other ports intended for connection to highly balanced pairs, a line to line test is not required.
- 2) Ports directly connected to power ports or to the (public) low voltage network are classified as power ports also.

8.4. Test Procedure

According to EN 61000-4-5.

The EUT and its load are placed on a table that is 0.8 meter above a metal ground plane measured 1m*1m min. and 0.65mm thick min. And projected beyond the EUT by at least 0.1m on all sides. The length of power cord between the coupling device and the EUT shall be 2m or less.

For Input and Output AC Power or DC Input and DC Output Power Ports:

The EUT is connected to the power mains through a coupling device that directly couples the Surge interference signal.

The surge noise shall be applied synchronized to the voltage phase at 0°, 90°, 180°, 270° and the peak value of the a.c. voltage wave. (Positive and negative)

Each of Line-Earth and Line-Line is impressed with a sequence of five surge voltages with interval of 1 min.

8.5. Deviation from Test Standard

No deviation.

8.6. Test Result

Product	Network Camera		
Test Item	Surge		
Test Mode	Mode 1: IB9389-EHT-v2, PoE Mode		
Date of Test	2021/07/13	Test Site	No.6 Shielded Room
Environmental	23(°C) 51(%RH)	Engineer	Ken Pan

Inject Line	Polarity	Voltage kV	Angle	Time Interval (Second)	Inject Method	Required Criteria	Complied to Criteria	Result
RJ45 (Line to Line)	+	1kV	--	60	Direct	B	B	PASS
RJ45 (Line to Ground)	+	2kV	--	60	Direct	B	B	PASS

Note:

The testing performed is from lowest level up to the highest level as required by standard, but only highest level is shown on the report.

- Meet criteria A : Operate as intended during and after the test
- Meet criteria B : Operate as intended after the test
- Meet criteria C : Loss/Error of function
- Additional Information
 - EUT stopped operation and could / could not be reset by operator at _____ kV of Line _____.
- No false alarms or other malfunctions were observed during or after the test.

8.7. Test Photograph

Test Mode : Mode 1: IB9389-EHT-v2, PoE Mode

Description : SURGE Test Setup-LAN



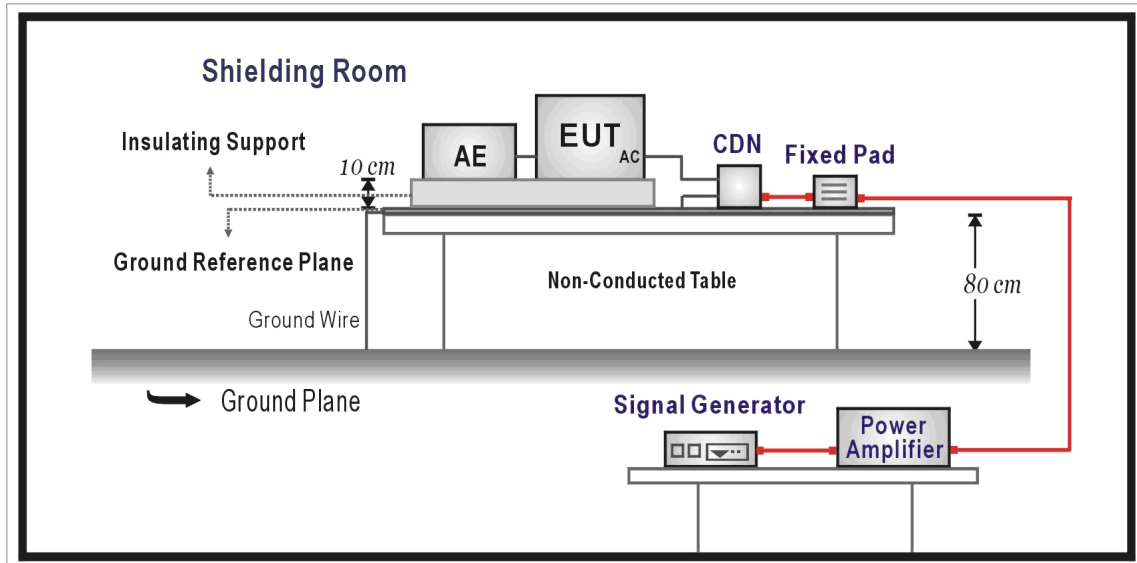
9. Conducted Susceptibility

9.1. Test Specification

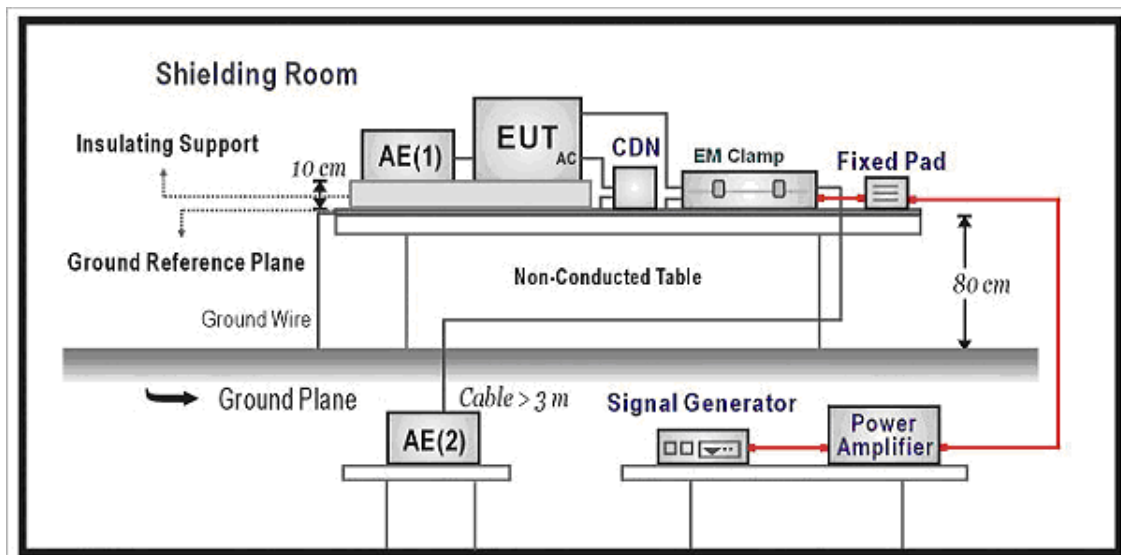
According to EN 50121-4 clause 6.

9.2. Test Setup

CDN Inject Method



EM Clamp Inject Method



9.3. Limit

Item	Environmental Phenomena	Units	Test Specification	Performance Criteria
Signal Ports and Telecommunication Ports				
	Radio-Frequency Continuous Conducted	MHz V (rms, Un-modulated) % AM (1kHz)	0.15-80 10 80	A
Input DC Power Ports				
	Radio-Frequency Continuous Conducted	MHz V (rms, Un-modulated) % AM (1kHz)	0.15-80 10 80	A
Input AC Power Ports				
	Radio-Frequency Continuous Conducted	MHz V (rms, Un-modulated) % AM (1kHz)	0.15-80 10 80	A

9.4. Test Procedure

According to EN 61000-4-6.

The EUT are placed on a table that is 0.8 meter height, and a Ground reference plane on the table, EUT are placed upon table and use a 10cm insulation between the EUT and Ground reference plane.

For Signal Ports and Telecommunication Ports

The disturbance signal is through a coupling and decoupling networks (CDN) or EM-clamp device couples to the signal and Telecommunication lines of the EUT.

For Input DC and AC Power Ports

The EUT is connected to the power mains through a coupling and decoupling networks for power supply lines. And directly couples the disturbances signal into EUT.

Used CDN-M2 for two wires or CDN-M3 for three wires.

All the scanning conditions are as follows:

Condition of Test	Remarks
1. Field Strength	140dB μ V(10V) Level 3
2. Radiated Signal	AM 80% Modulated with 1kHz
3. Scanning Frequency	0.15MHz – 80MHz
4. Dwell Time	3 Seconds
5. Frequency step size Δf :	1%

9.5. Deviation from Test Standard

No deviation.

9.6. Test Result

Product	Network Camera		
Test Item	Conducted susceptibility		
Test Mode	Mode 1: IB9389-EHT-v2, PoE Mode		
Date of Test	2021/07/13	Test Site	No.6 Shielded Room
Environmental	22(°C) 52(%RH)	Engineer	Ken Pan

Frequency Range (MHz)	Voltage Applied (V)	Inject Method	Tested Port of EUT	Required Criteria	Performance Criteria Complied To	Result
0.15~80	10	CDN	LAN	A	A	PASS

Note:

The testing performed is from lowest level up to the highest level as required by standard, but only highest level is shown on the report.

- Meet criteria A : Operate as intended during and after the test
- Meet criteria B : Operate as intended after the test
- Meet criteria C : Loss/Error of function
- Additional Information
 - EUT stopped operation and could / could not be reset by operator at ____ dBuV(V) at frequency ____MHz.
 - No false alarms or other malfunctions were observed during or after the test. The acceptance criteria were met, and the EUT passed the test.

9.7. Test Photograph

Test Mode : Mode 1: IB9389-EHT-v2, PoE Mode

Description : Conducted Susceptibility Test Setup-CDN

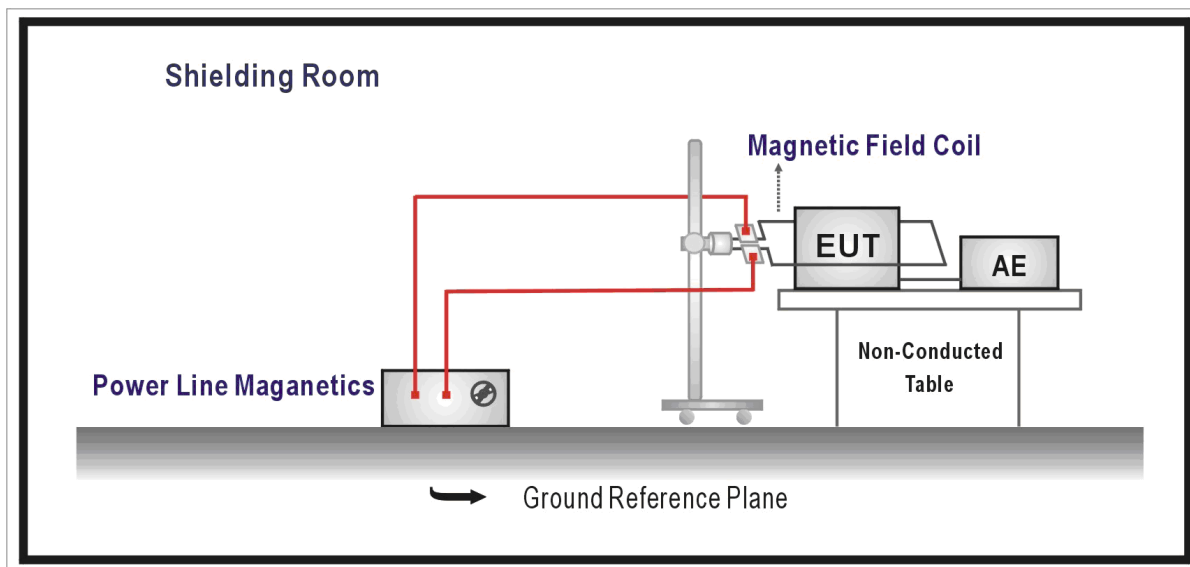


10. Power Frequency Magnetic Field

10.1. Test Specification

According to EN 50121-4 clause 6.

10.2. Test Setup



10.3. Limit

Item	Environmental Phenomena	Units	Test Specification	Performance Criteria
Enclosure Port				
	Power-Frequency Magnetic Field	Hz	16.7	A
		Hz	50	
		Hz	0 d.c	
		A/m (r.m.s.)	100 a.c. systems	
		A/m (r.m.s.)	300 d.c. systems	

Note: Test only applies to apparatus containing devices sensitive to magnetic fields, such as Hall elements, electro-dynamic microphones etc.

10.4. Test Procedure

According to EN 61000-4-8.

The EUT and its load are placed on a table which is 0.8 meter above a metal ground plane measured at least 1m*1m min. The test magnetic field shall be placed at central of the induction coil.

The plane of the inductive coil shall then be rotated by 90° in order to expose the EUT to the test field with different orientations(X, Y, Z Orientations) and the same procedure.

10.5. Deviation from Test Standard

No deviation.

10.6. Test Result

Product	Network Camera		
Test Item	Power frequency magnetic field		
Test Mode	Mode 1: IB9389-EHT-v2, PoE Mode		
Date of Test	2021/07/13	Test Site	No.3 Shielded Room
Environmental	22 (°C) 52(%RH)	Engineer	Ken Pan

Polarization	Frequency (Hz)	Inject Time (s)	Magnetic Strength (A/m)	Required Performance Criteria	Performance Criteria Complied To	Test Result
X Orientation	50	60	100	A	A	PASS
Y Orientation	50	60	100	A	A	PASS
Z Orientation	50	60	100	A	A	PASS
X Orientation	16.7	60	100	A	A	PASS
Y Orientation	16.7	60	100	A	A	PASS
Z Orientation	16.7	60	100	A	A	PASS
X Orientation	0	60	300	A	A	PASS
Y Orientation	0	60	300	A	A	PASS
Z Orientation	0	60	300	A	A	PASS

- Meet criteria A: Operate as intended during and after the test
- Meet criteria B: Operate as intended after the test
- Meet criteria C: Loss/Error of function
- Additional Information
 - EUT stopped operation and could / could not be reset by operator at _____ kV of Line _____.
- No false alarms or other malfunctions were observed during or after the test. The acceptance criteria were met, and the EUT passed the test.

10.7. Test Photograph

Test Mode : Mode 1: IB9389-EHT-v2, PoE Mode

Description : Power Frequency Magnetic Field Test Setup



11. Attachment

➤ **EUT Photograph**

(1) EUT Photo



(2) EUT Photo



(3) EUT Photo

